



**Jan. 2016 Edition**

**Important Note:** If printing pages, make sure to do so at **100%** so the real-size layouts on pages 14 & 15 will be accurate. **Do not** “fit to page”!

**GenHunter® Corporation**

**PerfectWestern® Product Line 2016**

*Containers, Membranes, Film,  
Shakers, Pipettors, Agarose*

## Contact and Ordering Information

**By mail:** GenHunter Corporation  
624 Grassmere Park Drive  
Suite 17  
Nashville, TN 37211 USA

**By Phone:** 800-311-8260 or 615-833-0665

**By Fax:** 615-832-9461

**By e-mail:** info@genhunter.com  
orders@genhunter.com

**Online Ordering:** www.GenHunter.com  
www.PerfectWestern.com

We need the following information to process an order by fax, phone, or email:

- Billing address
- Shipping address
- Purchase order / Credit card number
- Name and telephone number of persons placing the order
- Catalog number, description, and quantity ordered

## Terms

Net 30 days from the date of invoice in U.S. dollars.

## Pricing and Shipping

Prices listed are only for the U.S., Canada, & other countries without distributors and are subject to change without notice. Find distributors outside the U.S. and Canada at [www.GenHunter.com/distributors](http://www.GenHunter.com/distributors).

Products are shipped FOB Nashville, TN. Shipping charges are prepaid and added to your invoice. PerfectWestern® container orders are generally sent within the U.S. via UPS or FedEx and to Canada by UPS, unless otherwise requested.

## Warranty

GenHunter warrants that the products will meet specifications listed. Free replacement of any non-conforming products will be made only if GenHunter is notified within 30 days of product receipt.

Any recommendations, including container or volume usage, are based on our own experience or research, but are not guaranteed to be correct. Please check the exact size of the gels from your apparatus and compare it to the PerfectWestern® container (inside dimensions are given) or real-size layout (pages 14 & 15) to be sure. The volumes needed for Western blotting steps will vary based on shaker/rocker used and are only guidelines.

## Conditions of Product Use

All products are for research use only. GenHunter disclaims any responsibility for injury or damage that may be caused by the failure of the buyer or any other person to use these products correctly.

## Trademarks

The following trademarks and registered trademarks are accurate to the best of our knowledge at the time of printing. Please contact the individual manufacturers for more specific information.

AP-TAG®, GenHunter®, the GenHunter Corporation logo®, MessageClean®, PCR-TRAP®, PerfectWestern®, and RNApure® are registered trademarks of GenHunter Corporation.

MycosHunter™, NeverWear™, PerfectFilm™, PerfectMembrane™, PerfectPipettor™, PerfectRocker™, and TRIMER-TAG™ are trademarks of GenHunter Corporation.

American Express: American Express® and the American Express Logo® are trademarks of American Express Company.

Biometra: Biometra® is a trademark of Biometra Biomedizinische Analytik GmbH.

Bio-Rad: Bio-Rad®, Criterion™, Mini-PROTEAN®, and PROTEAN® are trademarks of Bio-Rad Laboratories.

FedEx: Federal Express® is a trademark of Federal Express Corporation.

GE: Amersham, Deep Purple, Ettan, ExcelGel, GE, and Multiphor are trademarks of General Electric Company.

Hoefler: Hoefler®, Mighty Small™, and miniVE™ are trademarks of Hoefler, Inc.

IBI: Belly Button®, Belly Dancer®, and Stovall are trademarks of IBI (formerly Stovall Life Science, Inc.)

ICP: Coomassie® is a registered trademark of Imperial Chemicals Industries PLC.

Invitrogen: E-PAGE™, Invitrogen™, Novex®, XCell SureLock™, and XCell II™ are trademarks of Invitrogen Corporation.

Lonza: Cambrex, Lonza, and PAGER® are trademarks of Lonza Group.

Mastercard: Mastercard® and the Mastercard Logo® are trademarks of MasterCard International, Inc.

Molecular Probes: Molecular Probes® and SYPRO® are trademarks of Molecular Probes, Inc.

ThermoFisher Scientific: Owl®, Penguin™, Puffin™ and ThermoFisher® are trademarks of Thermo Fisher Scientific, Inc.

UPS: UPS is a trademark of United Parcel Service of America, Inc.

Visa: Visa® and the Visa Logo® are trademarks of Visa International Service Assoc.

For your convenience, GenHunter accepts these credit cards:





# PerfectWestern® Product Line

Containers, Membranes, Film, Shakers, Pipettors, Agarose

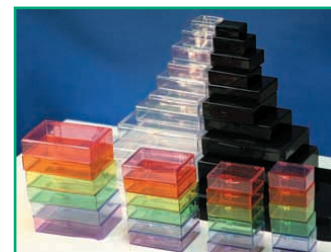
*Save Money While Producing Superior Western Blots*



## PerfectWestern® Containers

Page(s)  
2 - 12

- Containers for all Western blotting steps: Antibody incubation, washing, & staining
- **37** different sizes in clear, black, and transparent colors
- For whole blots, half blots, strips, 2D gels, etc.
- **Minimize volumes = Money Saved on Expensive Antibodies/Reagents**



## PerfectFilm™ for Western Blotting

13

- Inexpensive, high-quality autoradiography film for chemiluminescence (ECL)
- **High Contrast, Low Background, Publication Quality Images. And 3-5X cheaper!**



## The PerfectMembrane™

16 - 18

- Inexpensive pre-cut membranes for standard mini gels & larger precast gels
- Available in 3 sizes in 4 versions (3 types of PVDF and Nitrocellulose)
- Half the cost of competitors' membranes
- **Save time and materials while improving reproducibility**



## Agarose (Powder & Tablets)

19

- Inexpensive, standard molecular biology grade agarose, LE type (Low EEO)
- **Available in powder or pre-weighed 0.5 g tablets**

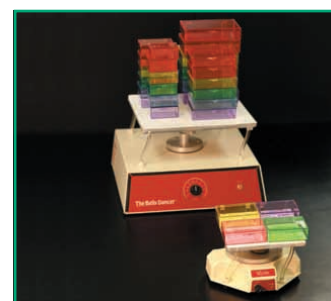


## Laboratory Shakers & Rockers:

20 - 23

### The Belly Dancer®, Belly Button®, & The PerfectRocker™

- Unique shakers & rockers ideal for Western blotting & other applications
- 3 different sizes and options; Quiet and dependable
- Variable speed and pitch control; Benchtop, cold room, or incubator usage
- Smooth combinations of vertical and horizontal motion provide wide range of uses
- **Save money - unique motion allows efficient movement of small volumes**



## PerfectPipettors™

24 - 26

- Standard laboratory pipettors: single-channel or multi-channel versions
- Precise, durable, and affordable. Use standard tips.
- 2, 10, 20, 100, 200, and 1000 µL single-channel versions
- 20 or 200 µL, 8- or 12-channel multi-channel versions
- **Special promotional pricing:**
  - Single-channel **\$99 each -> over 70% cheaper than competitors**
  - Multi-channel **\$330 each for 8-channel; \$365 for 12-channel**



## More GenHunter Products/Services

27 - 29

- Products for Cell Culture, AP-TAG® Receptor/Ligand interaction, Differential Display (DD), RNA isolation/cleaning, PCR Cloning, TRIMER-TAG™.

# PerfectWestern® Containers from GenHunter

## Beautiful Western Blots, While Saving Money on Antibodies and Other Reagents.

These specially designed containers perfectly fit Western blots of different size, including whole blots, half blots, and strips. They come in 37 different sizes in both clear and black plastic as well as 6 transparent colors.

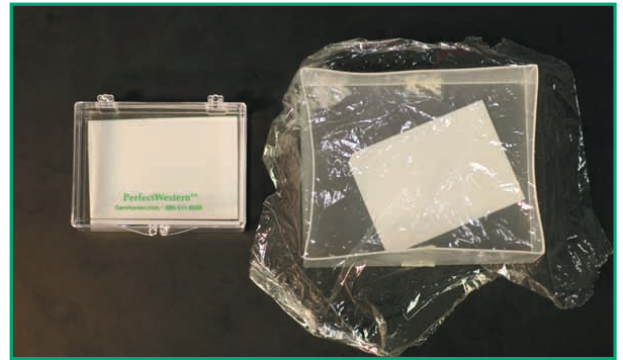
These containers were conceived by our own frustration in searching for suitable containers for Western blots. The choices were often much too large and never flat enough, causing waste of antibody and concern about scratching the membrane. So we designed our own containers offering many different sizes and options to truly achieve a PerfectWestern®.

### Features:

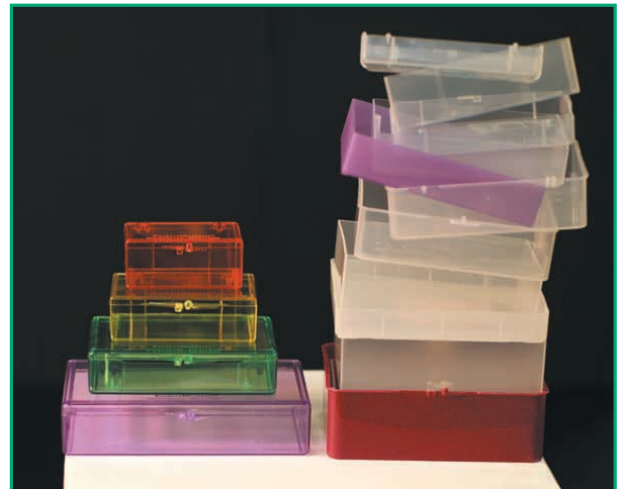
- Ultra-smooth flat inner surfaces
- Lids to minimize evaporation & fume exposure
- 90° edges for excellent membrane movement
- Stable up to at least 70° C for stripping, etc.
- 37 sizes - a perfect size for any gel
- Made in the U.S.A.

### Save up to 75% on Antibodies & Reagents!

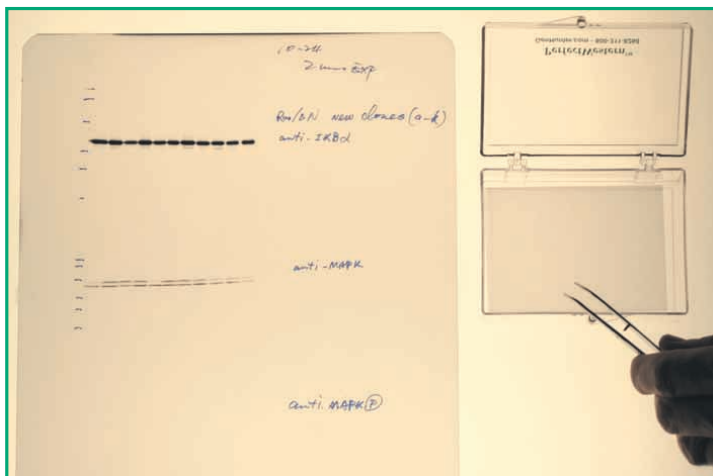
Because of these features, the volume needed for all Western blotting steps is dramatically reduced, often up to 75%, saving money on antibodies and other reagents.



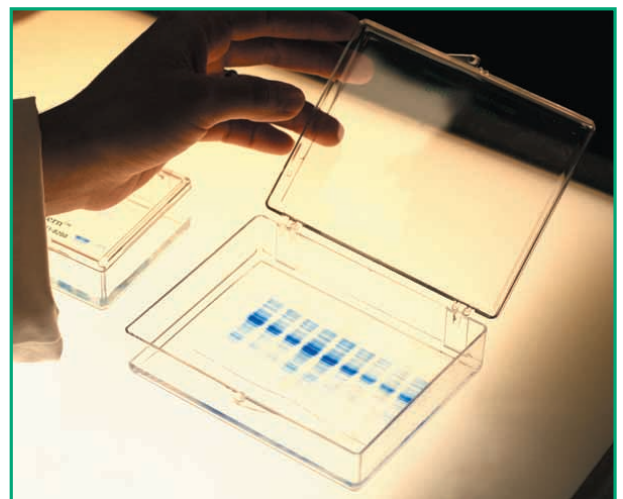
**Much better than pipet tip lids  
Reduce Antibody usage by 75%!**



**Organize your lab and save money**



**Beautiful Western blots every time**



**Easy visualization of staining**



# Perfectly Flat, Perfectly Sized = PerfectWestern®

## 37 Different Sized PerfectWestern® Containers Now Available

### Which PerfectWestern® Container fits your Gel System?

For the easiest answer, consult the “Actual Sizes” layout on pages 14 & 15.

| Gel Manufacturer | Our Container | Cat. No. |
|------------------|---------------|----------|
|------------------|---------------|----------|

#### **Biometra (formerly from Invitrogen)**

|                          |                        |                |
|--------------------------|------------------------|----------------|
| Mini-V 8•10              | Medium                 | B101           |
| V15•17 Vert. Gel. Elect. | Jumbo/Enormo           | B138/B111      |
| V16 or V16-2             | Jumbo/Enormo           | B138/B111      |
| Maxigel                  | Enormo/Colosso/2D Tray | B111/B140/B142 |

#### **Bio-Rad Systems**

|                     |                        |                |
|---------------------|------------------------|----------------|
| Mini-PROTEAN 3      | Medium                 | B101           |
| Criterion Precast   | Extra Large            | B109           |
| PROTEAN II xi, 16cm | Jumbo/Enormo           | B138/B111      |
| PROTEAN II xi, 20cm | Enormo                 | B111           |
| PROTEAN II XL, 20cm | Enormo/Colosso/2D Tray | B111/B140/B142 |
| PROTEAN Plus        | Colosso/2D Tray        | B140/B142      |

#### **GE Healthcare / Hoefer (formerly Amersham)**

|                                   |                             |                |
|-----------------------------------|-----------------------------|----------------|
| Mighty Small SE250                | Medium/Mini Square          | B101/B144      |
| Mighty Small SE260                | Mini Square/Large           | B144/B107      |
| miniVE Vert. Gel Elect.(SE300)    | Large/Square                | B107/B119      |
| SE600/SE400 (18 x 8)              | Mini Doublewide/Extra Large | B136/B109      |
| SE600/SE400 (18 x 16)             | Jumbo/Enormo                | B138/B111      |
| SE640 (18 x 8)                    | Mini Doublewide             | B136           |
| SE660 (24 x 18)                   | Multi-Wide/Colosso/2D Tray  | B148/B140/B142 |
| Ettan Dalt II/six/twelve (2D gel) | Colosso/2D Tray             | B140/B142      |
| Multiphor II, Excel 2D 12.5       | Multi-Wide                  | B148           |
| Multiphor II, Excel XL 12-14      | Colosso/2D Tray             | B140/B142      |

#### **Invitrogen / Novex**

|                           |             |      |
|---------------------------|-------------|------|
| Novex XCell SureLock Mini | Mini Square | B144 |
| Novex XCell SureLock Midi | Extra Large | B109 |
| E-PAGE Gels               | Extra Large | B109 |

#### **Lonza (formerly Cambrex/FMC/BMA)**

|                                |             |      |
|--------------------------------|-------------|------|
| PAGEr Gold Precast (8.3 x 7.1) | Medium      | B101 |
| PAGEr Gold Precast (8.3 x 8.1) | Mini Square | B144 |

#### **Owl Systems**

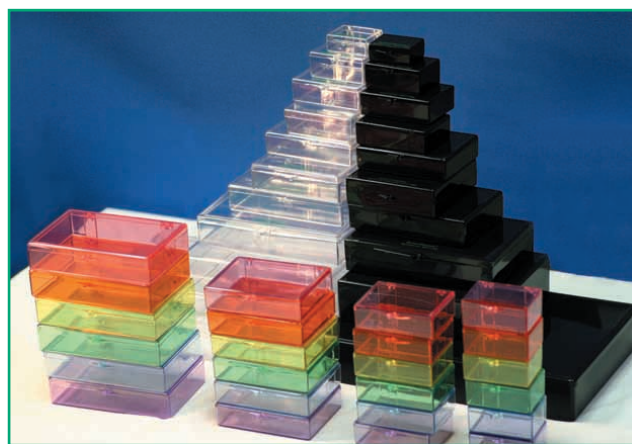
|               |                        |                |
|---------------|------------------------|----------------|
| Puffin P81    | Large/Square           | B107/B119      |
| Penguin P8DS  | Large/Square           | B107/B119      |
| Penguin P9DS  | Jumbo/Enormo           | B138/B111      |
| Penguin P10DS | Enormo/Colosso/2D Tray | B111/B140/B142 |

**Important Notes:** 1) All above catalog numbers are given for the clear version. If black or colored versions are desired, check on catalog number.

2) The above recommendations are not guaranteed to be correct. Please check the exact size of gels from your apparatus and compare it to the PerfectWestern® container (inside dimensions are given) or real-size layout (pages 14-15) to be sure.

Most of the 37 containers come in both clear and opaque black versions. The clear container allows easy visualization of the blot, whereas the black version keeps light-sensitive reagents protected.

In addition, 4 of our most popular sizes (Small, Medium, Large, and Extra Large) are available in 6 transparent colors: pink, orange, yellow, green, blue, and violet.



### More general information:

Most containers are made of durable polystyrene plastic. The exceptions are the PerfectWestern-Dura (using proprietary flexible “Dura” material; available in Small, Medium, Large, and Extra Large sizes), the black version of the Colosso (HDPE), the 2D Gel Staining Tray (polypropylene), and the Opaque Yellow 6-Sectional-ExtraLong (polypropylene).

All dimensions given for the PerfectWestern® containers are container inside dimensions.

For a real-size layout of all 37 sizes, see pages 14 and 15.

Give us Feedback: We are always designing new sizes, but if you need another PerfectWestern® container size or material that we do not currently offer, or have any other feedback, please let us know.



# MEDIUM: OUR MOST POPULAR CONTAINER FOR MINI-GELS

## 3-SECTIONAL-MEDIUM - FOR MINI-GELS

**Well Dimensions (LxWxH):** 10 x 6.6 x 3.3 cm • 3 15/16 x 2 5/8 x 1 3/8 inches

**Overall Dimensions (LxWxH):** 20.2 x 10 x 3.3 cm • 8 x 3 15/16 x 1 3/8 inches

**Gel Apparatuses, Solution Volumes, Applications:** same as “Medium” below

**Price each, for quantity ordered**

| ITEM                      | CAT. NO. | 1-4  | 5-9  | 10-19 | 20-49 | 50+  |
|---------------------------|----------|------|------|-------|-------|------|
| 3-Sectional-Medium, Clear | B101-3S  | \$48 | \$33 | \$29  | \$27  | \$26 |
| 3-Sectional-Medium, Black | B103-3S  | \$48 | \$33 | \$29  | \$27  | \$26 |

**Note:** Each of the 3 compartments is almost identical to the standard “Medium” (below) but is priced to be cheaper than purchasing 3 of those containers.



**3 BLOTS AT A TIME IN 1 CONTAINER!**

## Perfect Western-Dura, MEDIUM

**Dimensions (LxWxH):** 9.1 x 6.6 x 3.2 cm • 3 5/8 x 2 5/8 x 1 1/4 inches  
Same size as the “Medium” container below.

**Gel Apparatuses, Solution Volumes, Applications:** same as “Medium” below

**“Dura” Material: Virtually Unbreakable!**

This container is made of a more flexible proprietary polystyrene blend. Still crystal clear, but will last much longer. More info page 9.

**Price each, for quantity ordered**

| ITEM                               | CAT. NO. | 1-4  | 5-9  | 10-19 | 20-49 | 50+     |
|------------------------------------|----------|------|------|-------|-------|---------|
| PerfectWestern-Dura, Medium, Clear | B101-D   | \$21 | \$18 | \$16  | \$15  | \$14.50 |
| PerfectWestern-Dura, Medium, Black | B103-D   | \$21 | \$18 | \$16  | \$15  | \$14.50 |



**VIRTUALLY UNBREAKABLE!  
MORE DURABLE MATERIAL.**

## MEDIUM - FOR STANDARD MINI-GELS

**Dimensions (LxWxH):** 9.1 x 6.6 x 2.9 cm • 3 5/8 x 2 5/8 x 1 1/8 inches

**Gel Apparatuses:** Bio-Rad Mini-PROTEAN 3, GE Mighty Small SE250  
Biometra Mini-V 8•10, Lonza PAGEr (8.3 x 7.1)

**Solution Volumes:** 2 mL (minimum) 3 - 5 mL (recommended)

**Applications:** Western blotting, staining and destaining SDS-PAGE

**Available in Clear, Opaque, and Rainbow colors:**

- Clear** => Crystal clear - allows easy visualization of the blot.
- Opaque** => 3 Opaque Colors (Black, Green, Silver) - keeps light-sensitive reagents & fluorescent antibodies protected.
- Colors** => 6 Transparent Colors (see image, right) - blots are still easily visible. Allows color-coding for different antibodies or personal identity.

**Clear & Opaque Versions**

**Price each, for quantity ordered**

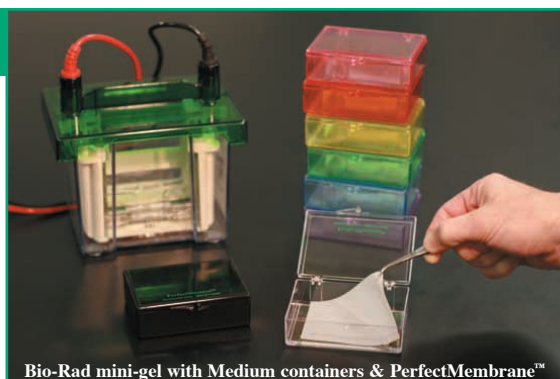
| ITEM                   | CAT. NO. | 1-4  | 5-9  | 10-19 | 20-49 | 50+     |
|------------------------|----------|------|------|-------|-------|---------|
| Medium, Clear          | B101     | \$17 | \$14 | \$12  | \$11  | \$10.50 |
| Medium, Black (Opaque) | B103     | \$17 | \$14 | \$12  | \$11  | \$10.50 |
| Medium, Opaque Green   | B103G    | \$17 | \$14 | \$12  | \$11  | \$10.50 |
| Medium, Opaque Silver  | B103A    | \$17 | \$14 | \$12  | \$11  | \$10.50 |

**Rainbow Color Versions**

**Price each, for quantity ordered**

| ITEM                                | CAT. NO. | 1-4     | 5-9     | 10-19   | 20-49   | 50+  |
|-------------------------------------|----------|---------|---------|---------|---------|------|
| Medium, one specific color (below*) | B1012*   | \$19.50 | \$16.50 | \$14.50 | \$13.50 | \$13 |
| Medium Rainbow Set (all 6 colors)   | B101S    | \$102   | \$82    | \$70    | \$63    | \$60 |

\*6 Colors: Pink (B101P), Orange (B101O), Yellow (B101Y), Green (B101G), Blue (B101B), Violet (B101V)



Bio-Rad mini-gel with Medium containers & PerfectMembrane™



Medium Rainbow Set on a Belly Dancer® Shaker

## MEDIUM-THIN - FOR STANDARD MINI-GELS

**Dimensions (LxWxH):** 9.1 x 6.6 x 1.9 cm • 3 5/8 x 2 5/8 x 3/4 inches

**Gel Apparatuses & Solution volumes:** Same as above

**Applications:** Western blotting

**Price each, for quantity ordered**

| ITEM               | CAT. NO. | 1-4  | 5-9  | 10-19 | 20-49 | 50+     |
|--------------------|----------|------|------|-------|-------|---------|
| Medium-Thin, Clear | B101-T   | \$17 | \$14 | \$12  | \$11  | \$10.50 |
| Medium-Thin, Black | B103-T   | \$17 | \$14 | \$12  | \$11  | \$10.50 |



**SAME LENGTH AND WIDTH, BUT ~2/3 THE HEIGHT.  
IMAGE: STANDARD MEDIUM (LEFT) AND MEDIUM-THIN (RIGHT)**

**Get Free PVDF or Nitrocellulose Membranes!  
See page 16 for more information on this offer**

# OTHER POPULAR CONTAINERS FOR MINI-GELS [4 OF 37 SIZES]

## EXTRA SMALL - FOR PORTIONS OF MINI-GELS

**Dimensions (LxWxH):** 5.3 x 4.0 x 2.2 cm • 2 1/16 x 1 9/16 x 7/8 inches

**Gel Apparatuses:** For small blots from any mini-gel apparatus

**Solution Volumes:** 1 mL (minimum) 1.5 - 2 mL (recommended)

**Applications:** Western blotting

**Price each, for quantity ordered**

| ITEM               | CAT. NO. | 1-4  | 5-9  | 10-19 | 20-49 | 50+    |
|--------------------|----------|------|------|-------|-------|--------|
| Extra Small, Clear | B121     | \$15 | \$12 | \$10  | \$9   | \$8.50 |
| Extra Small, Black | B122     | \$15 | \$12 | \$10  | \$9   | \$8.50 |



"Extra Small" container

See the Actual Sizes of all 37 containers on pages 14 & 15

## SMALL - FOR MINI-GELS CUT IN HALF

**Dimensions (LxWxH):** **Standard & Dura:** 7.3 x 5.1 x 3.3 cm • 2 7/8 x 2 x 1 5/16 inches  
**Thin version:** 7.3 x 5.1 x 1.9 cm • 2 7/8 x 2 x 3/4 inches

**Gel Apparatuses:** For half blots or small blots from any mini-gel apparatus

**Solution Volumes:** 1.5 mL (minimum) 2 - 3 mL (recommended)

**Applications:** Western blotting, staining and destaining SDS-PAGE

**Price each, for quantity ordered**

| ITEM                               | CAT. NO. | 1-4     | 5-9     | 10-19   | 20-49   | 50+    |
|------------------------------------|----------|---------|---------|---------|---------|--------|
| Small, Clear                       | B104     | \$16    | \$13    | \$11    | \$10    | \$9.50 |
| Small, Black                       | B105     | \$16    | \$13    | \$11    | \$10    | \$9.50 |
| Small, one specific color (below*) | B104?*   | \$18.50 | \$15.50 | \$13.50 | \$12.50 | \$12   |
| Small Rainbow Set (all 6 colors)   | B104S    | \$96    | \$76    | \$65    | \$59    | \$56   |

\*6 Colors: Pink (B104P), Orange (B104O), Yellow (B104Y), Green (B104G), Blue (B104B), Violet (B104V)

**New "Dura" version: Flexible proprietary material - Virtually Unbreakable!**

|                                   |        |      |      |      |      |         |
|-----------------------------------|--------|------|------|------|------|---------|
| PerfectWestern-Dura, Small, Clear | B104-D | \$20 | \$17 | \$15 | \$14 | \$13.50 |
| PerfectWestern-Dura, Small, Black | B105-D | \$20 | \$17 | \$15 | \$14 | \$13.50 |
| Small-Thin, Clear                 | B104-T | \$16 | \$13 | \$11 | \$10 | \$9.50  |
| Small-Thin, Black                 | B105-T | \$16 | \$13 | \$11 | \$10 | \$9.50  |



Above: "Small" (back) and "Small-Thin" (front) containers



"Small" is also available in 6 Colors & "Dura" Material



Above: Membrane from half a gel in the "Small-Thin" container

New Material

## MINI SQUARE - FOR LARGER MINI-GELS

**Dimensions (LxWxH):** 8.6 x 8.6 x 3.1 cm • 3 13/32 x 3 13/32 x 1 1/4 inches

**Gel Apparatuses:** Invitrogen/Novex XCell SureLock Mini, GE Mighty Small SE260 Lonza PAGER (8.3 x 8.1)

**Solution Volumes:** 2.5 mL (minimum) 4 - 6 mL (recommended)

**Applications:** Western blotting, staining and destaining SDS-PAGE

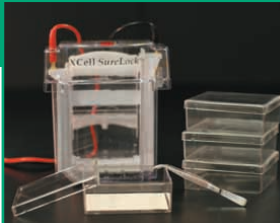
**Price each, for quantity ordered**

| ITEM                                     | CAT. NO. | 1-4     | 5-9     | 10-19   | 20-49   | 50+     |
|------------------------------------------|----------|---------|---------|---------|---------|---------|
| Mini Square, Clear                       | B144     | \$21    | \$17    | \$15    | \$13    | \$12    |
| Mini Square, Black                       | B145     | \$21    | \$17    | \$15    | \$13    | \$12    |
| Mini Square, one specific color (below*) | B144?*   | \$23.50 | \$19.50 | \$17.50 | \$15.50 | \$14.50 |
| Mini Square Rainbow Set (all 6 colors)   | B144S    | \$122   | \$97    | \$84    | \$77    | \$72    |

\*6 Colors: Pink (B144P), Orange (B144O), Yellow (B144Y), Green (B144G), Blue (B144B), Violet (B144V)

**Better Size for Invitrogen Mini: Use 30% Less Volume than the "Large" size! Allows you to save even more antibody.**

**Note:** This size has a "friction fit" as opposed to a standard "hinged" lid (see images).



"Mini Square" is now available in 6 Colors too



Large



Mini Square



Medium

Now in Rainbow Colors

## LARGE - FOR LARGER MINI-GELS

**Dimensions (LxWxH):** 11.7 x 9.0 x 2.9 cm • 4 5/8 x 3 9/16 x 1 1/8 inches

**Gel Apparatuses:** Invitrogen/Novex XCell SureLock Mini, GE Mighty Small SE260 Lonza PAGER (8.3 x 8.1), Owl Puffin P81, Owl Penguin P8DS

**Solution Volumes:** 3.5 mL (minimum) 6 - 10 mL (recommended)

**Applications:** Western blotting, staining and destaining SDS-PAGE

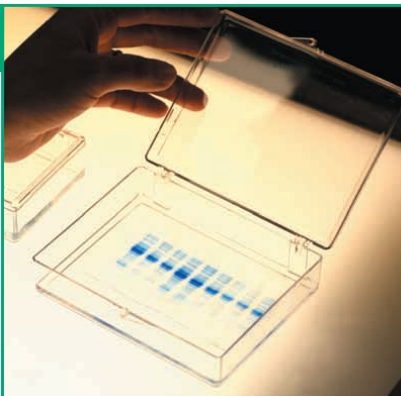
**Price each, for quantity ordered**

| ITEM                               | CAT. NO. | 1-4     | 5-9     | 10-19   | 20-49   | 50+     |
|------------------------------------|----------|---------|---------|---------|---------|---------|
| Large, Clear                       | B107     | \$25    | \$20    | \$17    | \$16    | \$15    |
| Large, Black                       | B108     | \$25    | \$20    | \$17    | \$16    | \$15    |
| Large, one specific color (below*) | B107?*   | \$27.50 | \$22.50 | \$19.50 | \$18.50 | \$17.50 |
| Large Rainbow Set (all 6 colors)   | B107S    | \$137   | \$110   | \$95    | \$87    | \$83    |

\*6 Colors: Pink (B107P), Orange (B107O), Yellow (B107Y), Green (B107G), Blue (B107B), Violet (B107V)

**New "Dura" version: Flexible proprietary material - Virtually Unbreakable!**

|                                   |        |      |      |      |      |      |
|-----------------------------------|--------|------|------|------|------|------|
| PerfectWestern-Dura, Large, Clear | B107-D | \$29 | \$24 | \$21 | \$20 | \$19 |
| PerfectWestern-Dura, Large, Black | B108-D | \$29 | \$24 | \$21 | \$20 | \$19 |



Great for mini-gel Coomassie staining & washing steps



Also available in 6 Colors & the New "Dura" Material

New Material

All dimensions given for all PerfectWestern® containers are container inside dimensions.



# COMPARTMENTED (“SECTIONAL”) CONTAINERS FOR STRIPS

## 3-SECTIONAL-STRIP - FOR THIN STRIPS FROM MINI-PROTEIN GELS

| ITEM                     | CAT. NO. | 1-4  | 5-9  | 10-19 | 20-49 | 50+  |
|--------------------------|----------|------|------|-------|-------|------|
| 3-Sectional-Strip, Clear | B106     | \$24 | \$19 | \$16  | \$14  | \$13 |
| 3-Sectional-Strip, Black | B125     | \$24 | \$19 | \$16  | \$14  | \$13 |

**Well Dimensions (LxWxH):** 3 wells each 7.3 x 1.6 x 1.3 cm • 2 7/8 x 5/8 x 1/2 inches  
**Overall Dimensions (LxWxH):** 7.3 x 5.1 cm • 2 7/8 x 2 inches  
**Height:** Clear is 1.6 cm, 5/8 inches. Black is 2.5 cm, 1 inch.

## 5-SECTIONAL-SHORTER - FOR STRIPS FROM MINI-PROTEIN GELS

| ITEM                       | CAT. NO. | 1-4  | 5-9  | 10-19 | 20-49 | 50+  |
|----------------------------|----------|------|------|-------|-------|------|
| 5-Sectional-Shorter, Clear | B154     | \$48 | \$41 | \$35  | \$31  | \$29 |
| 5-Sectional-Shorter, Black | B155     | \$58 | \$51 | \$45  | \$41  | \$39 |

**Note:** Each of the 5 compartments is a very similar length, but more narrow, than the “Small Strip” (see page 7). It is priced to be significantly cheaper than purchasing 5 of those containers.  
**Well Dimensions (LxWxH):** 5 wells each 7.3 x 2.4 x 3.3 cm • 2 7/8 x 15/16 x 1 3/8 inches  
**Overall Dimensions (LxWxH):** 14.5 x 7.3 x 3.3 cm • 5 3/4 x 2 7/8 x 1 3/8 inches

## 6-SECTIONAL-SHORT - FOR STRIPS FROM MINI-PROTEIN GELS

| ITEM                     | CAT. NO. | 1-4  | 5-9  | 10-19 | 20-49 | 50+  |
|--------------------------|----------|------|------|-------|-------|------|
| 6-Sectional-Short, Clear | B130     | \$55 | \$47 | \$41  | \$36  | \$32 |
| 6-Sectional-Short, Black | B131     | \$65 | \$57 | \$51  | \$46  | \$42 |

**Note:** Each of the 6 compartments is of a size between the “Small Strip” and “Small Strip EXT” (see page 7), but is priced to be significantly cheaper than purchasing 6 of those containers.  
**Well Dimensions (LxWxH):** 6 wells each 8.4 x 2.7 x 3.2 cm • 3 5/16 x 1 1/16 x 1 1/4 inches  
**Overall Dimensions (LxWxH):** 17.3 x 8.4 x 3.2 cm • 6 13/16 x 3 5/16 x 1 1/4 inches

## 6-SECTIONAL-MID - FOR STRIPS FROM MINI OR STANDARD GELS

| ITEM                   | CAT. NO. | 1-4  | 5-9  | 10-19 | 20-49 | 50+  |
|------------------------|----------|------|------|-------|-------|------|
| 6-Sectional-Mid, Clear | B132     | \$61 | \$52 | \$44  | \$39  | \$36 |
| 6-Sectional-Mid, Black | B133     | \$71 | \$62 | \$54  | \$49  | \$46 |

**Note:** Each of the 6 compartments is almost identical to the “Small Strip EXT” (see page 7), but is priced to be significantly cheaper than purchasing 6 of those containers.  
**Well Dimensions (LxWxH):** 6 wells each 10 x 3.2 x 3.3 cm • 3 15/16 x 1 9/32 x 1 3/8 inches  
**Overall Dimensions (LxWxH):** 20.2 x 10 x 3.3 cm • 8 x 3 15/16 x 1 3/8 inches

## 6-SECTIONAL-MID-LS - FOR STRIPS FROM PROTEIN GELS

| ITEM                      | CAT. NO. | 1-4                                                 | 5-9  | 10-19 | 20-49 | 50+  |
|---------------------------|----------|-----------------------------------------------------|------|-------|-------|------|
| 6-Sectional-Mid-LS, Clear | B150     | \$63                                                | \$54 | \$46  | \$41  | \$38 |
| 6-Sectional-Mid-LS, Black | B151     | Black not yet available. Let us know if interested. |      |       |       |      |

**Note:** These compartments are slightly longer (11.6 vs 10 cm) than the “6-Sectional-Mid”. Container also has a grid built into lid and feet in the base that allow them to stack better.  
**Well Dimensions (LxWxH):** 6 wells each 11.6 x 3.2 x 3.3 cm • 4 9/16 x 1 9/32 x 1 3/8 inches  
**Overall Dimensions (LxWxH):** 20.5 x 11.6 x 3.3 cm • 8 1/16 x 4 9/16 x 1 3/8 inches

## 6-SECTIONAL-LONG - FOR LONGER STRIPS FROM PROTEIN GELS

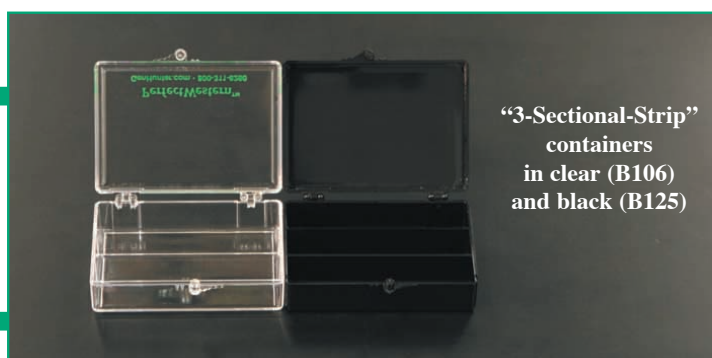
| ITEM                    | CAT. NO. | 1-4  | 5-9  | 10-19 | 20-49 | 50+  |
|-------------------------|----------|------|------|-------|-------|------|
| 6-Sectional-Long, Clear | B134     | \$69 | \$57 | \$49  | \$46  | \$44 |
| 6-Sectional-Long, Black | B135     | \$79 | \$67 | \$59  | \$56  | \$54 |

**Note:** Each of the 6 compartments is slightly shorter and wider than the “Long Strip” (see page 7), but is priced to be significantly cheaper than purchasing 6 of those containers.  
**Well Dimensions (LxWxH):** 6 wells each 15.8 x 4 x 4.4 cm • 6 3/16 x 1 9/16 x 1 3/4 inches  
**Overall Dimensions (LxWxH):** 26.7 x 15.8 x 4.4 cm • 10 1/2 x 6 3/16 x 1 3/4 inches

## 6-SECTIONAL-EXTRALONG - FOR LONGEST PROTEIN GEL STRIPS

| ITEM                                 | CAT. NO. | 1-4  | 5-9  | 10-19 | 20-49 | 50+  |
|--------------------------------------|----------|------|------|-------|-------|------|
| 6-Sectional-ExtraLong, Clear         | B152     | \$81 | \$68 | \$60  | \$57  | \$54 |
| 6-Sectional-ExtraLong, Opaque Yellow | B153     | \$81 | \$68 | \$60  | \$57  | \$54 |

**Notes:** 1) Each of the 6 compartments is slightly longer and wider than the “Long Strip”, but is priced to be significantly cheaper than purchasing 6 of those containers. 2) The “Opaque Yellow” color is for light-sensitive applications and is almost as opaque as “Black” versions. Standard black is not available yet. 3) The “Opaque Yellow” version is made of Polypropylene which is very durable, has good chemical resistance, and works well with fluorescent dyes.  
**Well Dimensions (LxWxH):** 6 wells each 21.3 x 5 x 5.7 cm • 8 3/8 x 1 15/16 x 2 1/4 inches  
**Overall Dimensions (LxWxH):** 32.1 x 21.3 x 5.7 cm • 12 5/8 x 8 3/8 x 2 1/4 inches



“3-Sectional-Strip” containers in clear (B106) and black (B125)

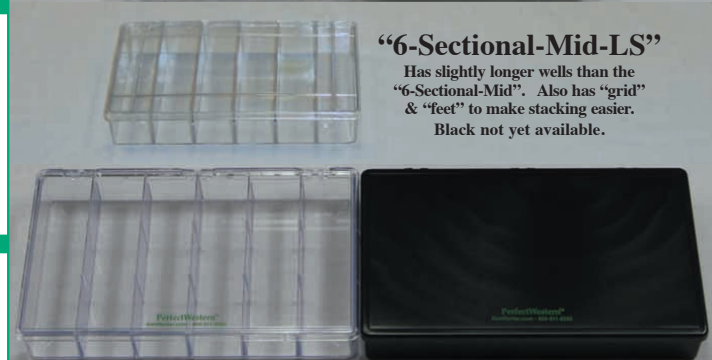


3-Sectional-Strip

5-Sectional-Shorter

6-Sectional-Short

-Mid



“6-Sectional-Mid-LS”

Has slightly longer wells than the “6-Sectional-Mid”. Also has “grid” & “feet” to make stacking easier. Black not yet available.

Compartmented Containers Shown (from top to bottom):  
 3-Sectional-Strip, 5-Sectional-Shorter,  
 6-Sectional-Short, 6-Sectional-Mid,  
 6-Sectional-Mid-LS, 6-Sectional-Long.



All dimensions given for all PerfectWestern® containers are container inside dimensions. Prices listed are only for the U.S., Canada, & other countries without distributors and are subject to change without notice!

Find distributors outside the U.S. and Canada at [www.GenHunter.com/distributors](http://www.GenHunter.com/distributors)

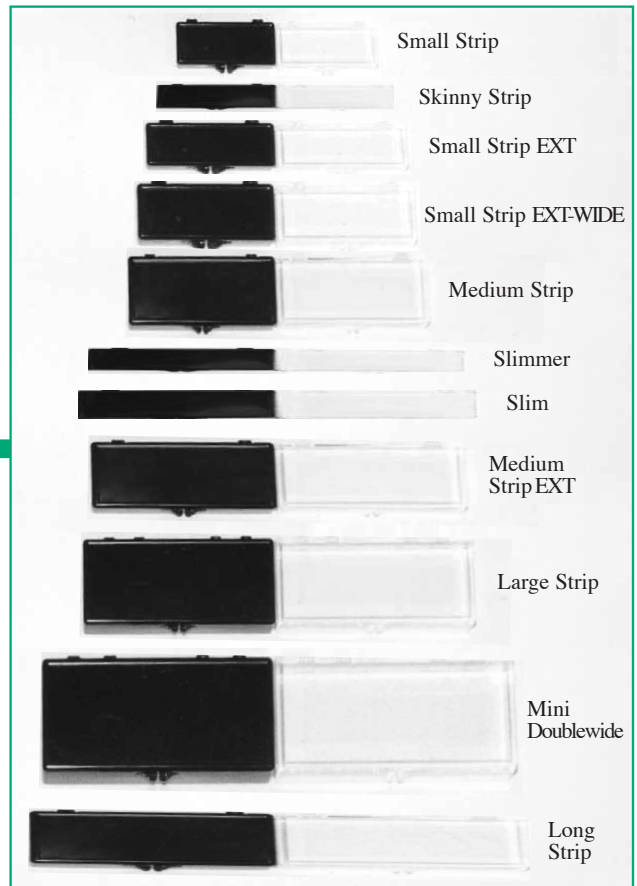
See the Actual Sizes of all 37 containers on pages 14 & 15



# NON-COMPARTMENTED CONTAINERS FOR STRIPS

Price each, for quantity ordered

| ITEM                                                                                                                                                                                     | CAT. NO. | 1-4  | 5-9  | 10-19 | 20-49 | 50+     |
|------------------------------------------------------------------------------------------------------------------------------------------------------------------------------------------|----------|------|------|-------|-------|---------|
| Small Strip, Clear                                                                                                                                                                       | B113     | \$15 | \$12 | \$10  | \$9   | \$8.50  |
| Small Strip, Black                                                                                                                                                                       | B114     | \$15 | \$12 | \$10  | \$9   | \$8.50  |
| <b>Dimensions (LxWxH):</b> 7.4 x 3.1 x 1.9 cm • 2 7/8 x 1 1/4 x 3/4 inches                                                                                                               |          |      |      |       |       |         |
| <b>Note:</b> Each compartment of the "5-Sectional-Shorter" & "6-Sectional-Short" containers (see page 6 at left) is similar to 1 "Small Strip". The "Sectional" containers have one lid. |          |      |      |       |       |         |
| <b>New Size</b> → Skinny Strip, Clear                                                                                                                                                    | B170     | \$15 | \$12 | \$10  | \$9   | \$8.50  |
| → Skinny Strip, Black                                                                                                                                                                    | B171     | \$15 | \$12 | \$10  | \$9   | \$8.50  |
| <b>Dimensions (LxWxH):</b> 8.8 x 1.75 x 1.3 cm • 3 7/16 x 11/16 x 1/2 inches                                                                                                             |          |      |      |       |       |         |
| Small Strip EXT, Clear                                                                                                                                                                   | B123     | \$16 | \$13 | \$11  | \$10  | \$9.50  |
| Small Strip EXT, Black                                                                                                                                                                   | B124     | \$16 | \$13 | \$11  | \$10  | \$9.50  |
| <b>Dimensions (LxWxH):</b> 9.5 x 3.0 x 1.9 cm • 3 7/8 x 1 3/16 x 3/4 inches                                                                                                              |          |      |      |       |       |         |
| <b>Note:</b> The "6-Sectional-Mid" container (see left) is similar to 6 "Small Strip EXT's" with one lid.                                                                                |          |      |      |       |       |         |
| <b>New Size</b> → Small Strip EXT-WIDE, Clear                                                                                                                                            | B172     | \$17 | \$14 | \$12  | \$11  | \$10.50 |
| → Small Strip EXT-WIDE, Black                                                                                                                                                            | B173     | \$17 | \$14 | \$12  | \$11  | \$10.50 |
| <b>Dimensions (LxWxH):</b> 10.1 x 4.05 x 2.8 cm • 4 x 1 19/32 x 1 1/16 inches                                                                                                            |          |      |      |       |       |         |
| Medium Strip, Clear                                                                                                                                                                      | B115     | \$17 | \$14 | \$12  | \$11  | \$10.50 |
| Medium Strip, Black                                                                                                                                                                      | B116     | \$17 | \$14 | \$12  | \$11  | \$10.50 |
| <b>Dimensions (LxWxH):</b> 11.1 x 5.2 x 2.6 cm • 4 3/8 x 2 1/16 x 1 inches                                                                                                               |          |      |      |       |       |         |
| Slimmer, Clear                                                                                                                                                                           | B128     | \$18 | \$15 | \$13  | \$12  | \$11.50 |
| Slimmer, Black                                                                                                                                                                           | B129     | \$18 | \$15 | \$13  | \$12  | \$11.50 |
| <b>Dimensions (LxWxH):</b> 14.3 x 1.4 x 1.7 cm • 5 9/16 x 9/16 x 11/16 inches                                                                                                            |          |      |      |       |       |         |
| Slim, Clear                                                                                                                                                                              | B146     | N/A  | N/A  | N/A   | N/A   | N/A     |
| Slim, Black                                                                                                                                                                              | B147     | \$22 | \$18 | \$16  | \$14  | \$13.50 |
| <b>Dimensions (LxWxH):</b> 15.0 x 1.85 x 1.9 cm • 5 15/16 x 11/16 x 3/4 inches                                                                                                           |          |      |      |       |       |         |
| <b>New Size</b> → Medium Strip EXT, Clear                                                                                                                                                | B168     | \$21 | \$17 | \$15  | \$13  | \$12    |
| → Medium Strip EXT, Black                                                                                                                                                                | B169     | \$21 | \$17 | \$15  | \$13  | \$12    |
| <b>Dimensions (LxWxH):</b> 13.9 x 5 x 3.2 cm • 5 1/2 x 2 x 1 5/16 inches                                                                                                                 |          |      |      |       |       |         |
| Large Strip, Clear                                                                                                                                                                       | B117     | \$26 | \$21 | \$18  | \$17  | \$16    |
| Large Strip, Black                                                                                                                                                                       | B118     | \$26 | \$21 | \$18  | \$17  | \$16    |
| <b>Dimensions (LxWxH):</b> 14.7 x 6.7 x 3.6 cm • 5 3/4 x 2 5/8 x 1 7/16 inches                                                                                                           |          |      |      |       |       |         |
| Mini Doublewide, Clear                                                                                                                                                                   | B136     | \$29 | \$25 | \$22  | \$20  | \$18    |
| Mini Doublewide, Black                                                                                                                                                                   | B137     | \$29 | \$25 | \$22  | \$20  | \$18    |
| <b>Dimensions (LxWxH):</b> 17.8 x 8.9 x 3 cm • 7 x 3 9/16 x 1 1/8 inches                                                                                                                 |          |      |      |       |       |         |
| Long Strip, Clear                                                                                                                                                                        | B126     | \$21 | \$17 | \$15  | \$13  | \$12    |
| Long Strip, Black                                                                                                                                                                        | B127     | \$21 | \$17 | \$15  | \$13  | \$12    |
| <b>Dimensions (LxWxH):</b> 19.0 x 3.8 x 2.2 cm • 7 1/2 x 1 1/2 x 13/16 inches                                                                                                            |          |      |      |       |       |         |
| <b>Note:</b> The "6-Sectional-Long" & "6-Sectional-ExtraLong" containers (see page 6 at left) are similar to 6 "Long Strips" with one lid.                                               |          |      |      |       |       |         |



# COMPARTMENTED TRAYS/CONTAINERS FOR VERY SKINNY STRIPS OR IEF/IPG STRIPS FOR 2D GELS

5 New Sizes

## 8- & 12-SECTIONAL-SKINNY TRAYS/CONTAINERS

| ITEM                                                                                                                                                                                                                                                              | CAT. NO. | 1-4  | 5-9  | 10-19 | 20-49 | 50+  |
|-------------------------------------------------------------------------------------------------------------------------------------------------------------------------------------------------------------------------------------------------------------------|----------|------|------|-------|-------|------|
| <b>12-Sectional-SkinnyL8 Tray (12SSL8)</b>                                                                                                                                                                                                                        | B158     | \$41 | \$36 | \$29  | \$26  | \$25 |
| <b>Well Dimensions (LxWxH):</b> 12 wells each 8.5 x 0.65 x 1.1 cm • 3 5/16 x 1/4 x 7/16 inches                                                                                                                                                                    |          |      |      |       |       |      |
| <b>Overall Dimensions (LxWxH):</b> 11 x 11.3 x 1.4 cm • 4 3/8 x 4 1/2 x 1/2 inches                                                                                                                                                                                |          |      |      |       |       |      |
| <b>8-Sectional-SkinnyL10 Tray (8SSL10)</b>                                                                                                                                                                                                                        | B160     | \$44 | \$38 | \$32  | \$28  | \$27 |
| <b>Well Dimensions (LxWxH):</b> 8 wells each 10.3 x 0.65 x 1.1 cm • 4 x 1/4 x 7/16 inches                                                                                                                                                                         |          |      |      |       |       |      |
| <b>Overall Dimensions (LxWxH):</b> 12.7 x 8.6 x 1.5 cm • 5 x 3 3/8 x 5/8 inches                                                                                                                                                                                   |          |      |      |       |       |      |
| <b>12-Sectional-SkinnyL12 Tray (12SSL12)</b>                                                                                                                                                                                                                      | B162     | \$47 | \$41 | \$34  | \$30  | \$28 |
| <b>Well Dimensions (LxWxH):</b> 12 wells each 12.5 x 0.65 x 1.1 cm • 4 15/16 x 1/4 x 7/16 inches                                                                                                                                                                  |          |      |      |       |       |      |
| <b>Overall Dimensions (LxWxH):</b> 14.9 x 11.3 x 1.4 cm • 5 7/8 x 4 1/2 x 1/2 inches                                                                                                                                                                              |          |      |      |       |       |      |
| <b>12-Sectional-SkinnyL15 Tray (12SSL15)</b>                                                                                                                                                                                                                      | B164     | \$50 | \$44 | \$36  | \$33  | \$30 |
| <b>Well Dimensions (LxWxH):</b> 12 wells each 14.9 x 0.65 x 1.1 cm • 5 7/8 x 1/4 x 7/16 inches                                                                                                                                                                    |          |      |      |       |       |      |
| <b>Overall Dimensions (LxWxH):</b> 17.2 x 11.3 x 1.4 cm • 6 13/16 x 4 1/2 x 1/2 inches                                                                                                                                                                            |          |      |      |       |       |      |
| <b>12-Sectional-SkinnyL18 Tray (12SSL18)</b>                                                                                                                                                                                                                      | B166     | \$54 | \$46 | \$38  | \$35  | \$33 |
| <b>Well Dimensions (LxWxH):</b> 12 wells each 18.4 x 0.65 x 1.1 cm • 7 1/4 x 1/4 x 7/16 inches                                                                                                                                                                    |          |      |      |       |       |      |
| <b>Overall Dimensions (LxWxH):</b> 20.9 x 11.3 x 1.4 cm • 8 3/8 x 4 1/2 x 1/2 inches                                                                                                                                                                              |          |      |      |       |       |      |
| <b>Notes:</b> The wells are tapered and get more narrow towards the bottom. The width at the top of the well is ~ 0.7 cm. The width at the bottom of the well is ~ 0.45 cm, but these trays work well with strips up to ~ 0.6 cm (6 mm) using very small volumes. |          |      |      |       |       |      |
| All trays have opaque white bases and clear lids (no hinges). Opaque lids are not yet available, but let us know if you are interested.                                                                                                                           |          |      |      |       |       |      |



## Features:

- Useful for screening multiple antibodies simultaneously
- Save valuable antibody by testing strips first
- Numbered wells
- Clear lids
- No cross-contamination
- Compatible with 8- or 12-Channel pipets

Ideal for very skinny strips

THERE ARE 8 MORE SIZES AVAILABLE (SHOWN ON PAGES 8 & 12). PLUS 4 "DURA" CONTAINERS SHOWN ON PAGE 9.

# LARGER RECTANGULAR CONTAINERS

## EXTRA LARGE - FOR LARGER PROTEIN GELS

**Dimensions (LxWxH):** 15.4 x 10.4 x 3.6 cm • 6 1/16 x 4 1/16 x 1 1/2 inches  
**Gel Apparatuses:** Bio-Rad Criterion, Invitrogen/Novex XCell SureLock Midi or E-PAGE  
**Solution Volumes:** 9 mL (minimum) 11 - 15 mL (recommended)

| ITEM                                     | CAT. NO. | 1-4     | 5-9     | 10-19   | 20-49   | 50+     |
|------------------------------------------|----------|---------|---------|---------|---------|---------|
| Extra Large, Clear                       | B109     | \$29    | \$25    | \$22    | \$20    | \$18    |
| Extra Large, Black                       | B110     | \$29    | \$25    | \$22    | \$20    | \$18    |
| Extra Large, one specific color (below*) | B109?*   | \$31.50 | \$27.50 | \$24.50 | \$22.50 | \$20.50 |
| Extra Large Rainbow Set (all 6 colors)   | B109S    | \$168   | \$136   | \$115   | \$105   | \$100   |

\*6 Colors: Pink (B109P), Orange (B109O), Yellow (B109Y), Green (B109G), Blue (B109B), Violet (B109V)  
**New "Dura" version: Flexible proprietary material - Virtually Unbreakable!**

|                                |        |      |      |      |      |      |
|--------------------------------|--------|------|------|------|------|------|
| PerfectWestern-Dura, XL, Clear | B109-D | \$33 | \$29 | \$26 | \$24 | \$22 |
| PerfectWestern-Dura, XL, Black | B110-D | \$33 | \$29 | \$26 | \$24 | \$22 |

New Material

## JUMBO - FOR VERY LARGE PROTEIN GELS

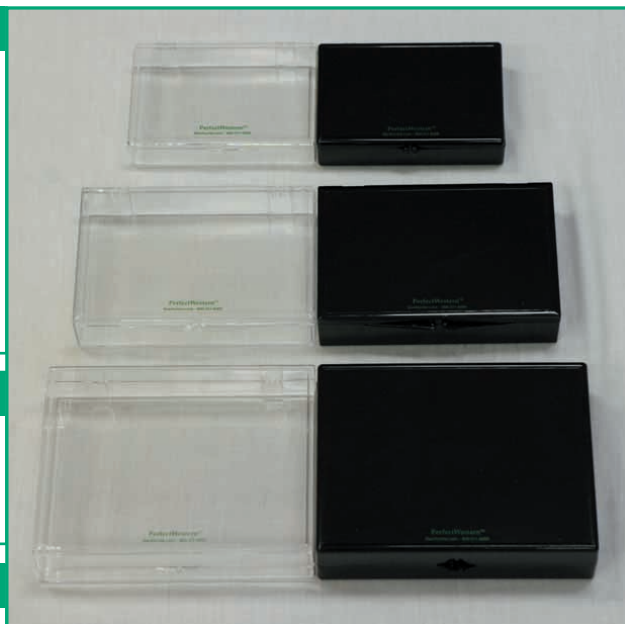
**Dimensions (LxWxH):** 18.8 x 12.5 x 4.1 cm • 7 7/16 x 4 15/16 x 1 5/8 inches  
**Solution Volumes:** 12 mL (minimum) 14 - 20 mL (recommended)

| ITEM         | CAT. NO. | 1-4  | 5-9  | 10-19 | 20-49 | 50+  |
|--------------|----------|------|------|-------|-------|------|
| Jumbo, Clear | B138     | \$32 | \$27 | \$24  | \$22  | \$21 |
| Jumbo, Black | B139     | \$32 | \$27 | \$24  | \$22  | \$21 |

## ENORMO - FOR VERY LARGE PROTEIN GELS

**Dimensions (LxWxH):** 20.7 x 15.9 x 5.2 cm • 8 1/8 x 6 1/4 x 2 1/16 inches  
**Solution Volumes:** 18 mL (minimum) 20 - 30 mL (recommended)

| ITEM          | CAT. NO. | 1-4  | 5-9  | 10-19 | 20-49 | 50+  |
|---------------|----------|------|------|-------|-------|------|
| Enormo, Clear | B111     | \$38 | \$32 | \$29  | \$27  | \$24 |
| Enormo, Black | B112     | \$38 | \$32 | \$29  | \$27  | \$24 |



Pictured above (top to bottom): Extra Large, Jumbo, Enormo

**Note:** Extra Large is also available in 6 Rainbow colors & the "Dura" Material (see info above)

# LARGEST CONTAINERS FOR STAINING 2D GELS

## MULTI-WIDE - FOR VERY LARGE, WIDE 2D GELS

**Dimensions (LxWxH):** 26.7 x 15.8 x 4.4 cm • 10 1/2 x 6 3/16 x 1 3/4 inches

| ITEM              | CAT. NO. | 1-4                                                 | 5-9  | 10-19 | 20-49 | 50+  |
|-------------------|----------|-----------------------------------------------------|------|-------|-------|------|
| Multi-Wide, Clear | B148     | \$50                                                | \$41 | \$36  | \$33  | \$30 |
| Multi-Wide, Black | B149     | Black not yet available. Let us know if interested. |      |       |       |      |

**Note:** This "Multi-Wide" container perfectly holds 11 "Slim" containers side-by-side inside.

## COLOSSO - FOR LARGEST PROTEIN GELS (2D GELS, ETC.)

**Dimensions (LxWxH):** Clear: 32.1 x 21.3 x 5.7 cm • 12 5/8 x 8 3/8 x 2 1/4 inches  
 Black: 31.7 x 21.0 x 5.6 cm • 12 7/16 x 8 9/32 x 2 3/16 inches

**Solution Volumes:** ~ 400 mLs is required to cover a 3mm glass plate and gel!

### Material Notes:

The Clear version is made of polystyrene, like our other PerfectWesterns.

The Black version is made of HDPE (high density polyethylene), which is very durable, has good chemical resistance, & works well with fluorescent dyes such as SYPRO Ruby, Deep Purple, etc.

| ITEM           | CAT. NO. | 1-4  | 5-9  | 10-19 | 20-49 | 50+  |
|----------------|----------|------|------|-------|-------|------|
| Colosso, Clear | B140     | \$68 | \$57 | \$49  | \$46  | \$43 |
| Colosso, Black | B141     | \$88 | \$77 | \$69  | \$66  | \$63 |

## 2D GEL STAINING TRAY - FOR LARGEST PROTEIN GELS

**Dimensions (LxWxH):** 29.3 x 23 x 7.7 cm • 11 1/2 x 9 x 3 1/16 inches

**Solution Volumes:** ~ 500 mLs\* is required to cover a 3mm glass plate and gel!

### Material Notes:

The 2D Tray is made of Polypropylene, which is very durable, has good chemical resistance, and works well with fluorescent dyes such as SYPRO Ruby, Deep Purple, etc.

\*The bottom of the 2D Tray is not perfectly flat like all other PerfectWesterns, so even though the total area is similar to the Colosso, more volume is necessary.

| ITEM                        | CAT. NO. | 1-4  | 5-9  | 10-19 | 20-49 | 50+  |
|-----------------------------|----------|------|------|-------|-------|------|
| 2D Gel Staining Tray, Clear | B142     | \$68 | \$57 | \$49  | \$46  | \$43 |
| 2D Gel Staining Tray, Black | B143     | \$68 | \$57 | \$49  | \$46  | \$43 |



2D Gel Staining Tray



The 2D Tray can easily be stacked

See the Actual Sizes of all 37 containers on pages 14 and 15

### Which Black 2D container should I choose?

Both will work well for fluorescent applications, but there are differences that may help you decide.



Colosso

2D Gel Staining Tray

**First step:** Check your glass plate dimensions to ensure it fits.  
 Colosso is 31.7 x 21 cm.  
 2D Tray is 29.3 x 23 cm.

**Volume to Cover 3mm plate/gel:**  
 Colosso requires ~ 400 mLs.  
 2D Tray requires ~ 500 mLs.

**Material:**  
 Colosso is HDPE.  
 2D Tray is Polypropylene.

**Lid:**  
 Colosso has hinged lid.  
 2D Tray has separate lid.



# “Dura” PerfectWestern® Containers - NEW

Four of our most popular container sizes (Small, Medium, Large, & Extra Large) are now available in the “Dura” material.

The PerfectWestern-Dura™ containers use a more flexible, proprietary polystyrene blend. Still crystal clear, but are much stronger and will last longer.

Watch the new video demonstration at [www.PerfectWestern-Dura.com](http://www.PerfectWestern-Dura.com)

## PerfectWestern-Dura, SMALL

**Dimensions (LxWxH):** 7.3 x 5.1 x 3.3 cm • 2 7/8 x 2 x 1 5/16 inches

**Gel Apparatuses:** For half blots or small blots from any mini-gel apparatus

**Solution Volumes:** 1.5 mL (minimum) 2 - 3 mL (recommended)

Price each, for quantity ordered

| ITEM                              | CAT. No. | 1-4  | 5-9  | 10-19 | 20-49 | 50+     |
|-----------------------------------|----------|------|------|-------|-------|---------|
| PerfectWestern-Dura, Small, Clear | B104-D   | \$20 | \$17 | \$15  | \$14  | \$13.50 |
| PerfectWestern-Dura, Small, Black | B105-D   | \$20 | \$17 | \$15  | \$13  | \$13.50 |

**Note:** The “Small” size is also available in standard polystyrene, Rainbow colors, & “Small-Thin”. See page 5.



More flexible, virtually unbreakable!

## PerfectWestern-Dura, MEDIUM

**Dimensions (LxWxH):** 9.1 x 6.6 x 3.2 cm • 3 5/8 x 2 5/8 x 1 1/4 inches

**Gel Apparatuses:** Bio-Rad Mini-PROTEAN 3, GE Mighty Small SE250  
Biometra Mini-V 8•10, Lonza PAGEr (8.3 x 7.1)

**Solution Volumes:** 2 mL (minimum) 3 - 5 mL (recommended)

Price each, for quantity ordered

| ITEM                               | CAT. No. | 1-4  | 5-9  | 10-19 | 20-49 | 50+     |
|------------------------------------|----------|------|------|-------|-------|---------|
| PerfectWestern-Dura, Medium, Clear | B101-D   | \$21 | \$18 | \$16  | \$15  | \$14.50 |
| PerfectWestern-Dura, Medium, Black | B103-D   | \$21 | \$18 | \$16  | \$15  | \$14.50 |

**Note:** The “Medium” size is also available in standard polystyrene, Rainbow colors, the “3-Sectional-Medium”, & “Medium-Thin”. See page 4.



Still crystal clear

## PerfectWestern-Dura, LARGE

**Dimensions (LxWxH):** 11.7 x 9.0 x 2.9 cm • 4 5/8 x 3 9/16 x 1 1/8 inches (LxWxH)

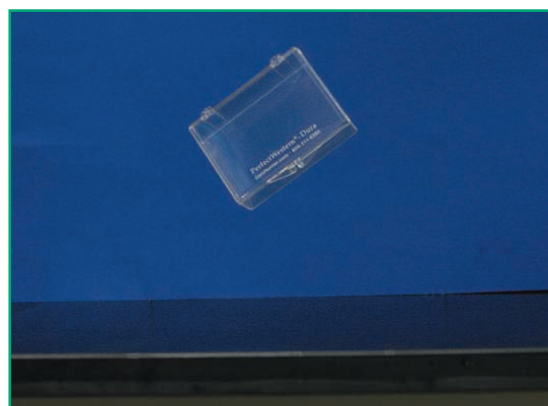
**Gel Apparatuses:** Invitrogen/Novex XCell SureLock Mini, GE Mighty Small SE260  
Lonza PAGEr (8.3 x 8.1), Owl Puffin P81, Owl Penguin P8DS

**Solution Volumes:** 3.5 mL (minimum) 6 - 10 mL (recommended)

Price each, for quantity ordered

| ITEM                              | CAT. No. | 1-4  | 5-9  | 10-19 | 20-49 | 50+  |
|-----------------------------------|----------|------|------|-------|-------|------|
| PerfectWestern-Dura, Large, Clear | B107-D   | \$29 | \$24 | \$21  | \$20  | \$19 |
| PerfectWestern-Dura, Large, Black | B108-D   | \$29 | \$24 | \$21  | \$20  | \$19 |

**Notes:** The “Large” size is also available in standard polystyrene & Rainbow colors. A newer size, the “Mini Square”, is also available that is 8.6 x 8.6 cm and uses 30% less volume than the “Large”. See page 5 for details.



Will not break if dropped!

## PerfectWestern-Dura, EXTRA LARGE

**Dimensions (LxWxH):** 15.4 x 10.4 x 3.6 cm • 6 1/16 x 4 1/16 x 1 1/2 inches

**Gel Apparatuses:** Bio-Rad Criterion, Invitrogen/Novex XCell SureLock Midi or E-PAGE

**Solution Volumes:** 9 mL (minimum) 11 - 15 mL (recommended)

Price each, for quantity ordered

| ITEM                                    | CAT. No. | 1-4  | 5-9  | 10-19 | 20-49 | 50+  |
|-----------------------------------------|----------|------|------|-------|-------|------|
| PerfectWestern-Dura, Extra Large, Clear | B109-D   | \$33 | \$29 | \$26  | \$24  | \$22 |
| PerfectWestern-Dura, Extra Large, Black | B110-D   | \$33 | \$29 | \$26  | \$24  | \$22 |

**Note:** The “Extra Large” size is also available in standard polystyrene & Rainbow colors. See page 8.

800-311-8260  
For Orders or Tech Support



www.GenHunter.com

# PerfectWestern® Rainbow Sets

4 sizes are available in 6 Rainbow colors!

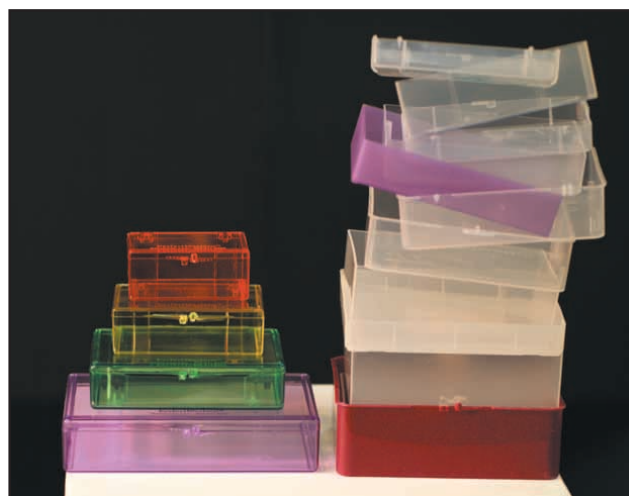
GenHunter offers 4 of our most popular container sizes (Small, Medium, Large, and Extra Large) in 6 different colors:

**pink, orange, yellow, green, blue, and violet.**

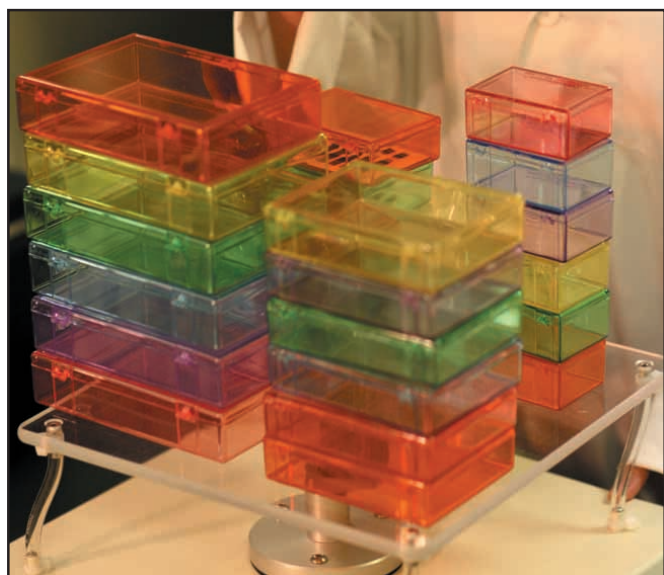
The containers are still transparent (see below) so blots are easily visible and the colors allow color-coding for organization or just for fun!



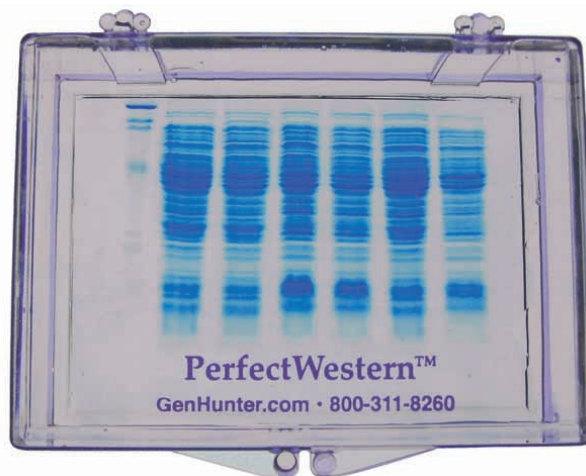
Medium, the most popular size, in all 6 colors



Organize your lab and save money



Small, Medium, Large, and Extra Large



Protein gel is still easily visible through the colored containers (violet shown)

**Get Free PVDF or Nitrocellulose Membranes!**  
See page 16 for more information on this offer



## SMALL - FOR MINI-GELS CUT IN HALF

**Dimensions (LxWxH):** 7.3 x 5.1 x 3.3 cm • 2 7/8 x 2 x 1 5/16 inches

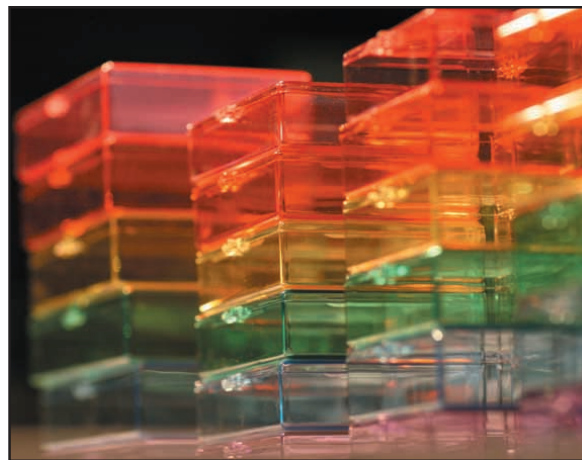
**Gel Apparatuses:** For half blots or small blots from any mini-gel apparatus

**Solution Volumes:** 1.5 mL (minimum) 2 - 3 mL (recommended)

### Price each, for quantity ordered

| ITEM                                                                                                        | CAT. No.     | 1-4         | 5-9         | 10-19       | 20-49       | 50+         |
|-------------------------------------------------------------------------------------------------------------|--------------|-------------|-------------|-------------|-------------|-------------|
| <b>Small Rainbow Set (all 6 colors)</b>                                                                     | <b>B104S</b> | <b>\$96</b> | <b>\$76</b> | <b>\$65</b> | <b>\$59</b> | <b>\$56</b> |
| Small, one specific color (below*)                                                                          | B104?*       | \$18.50     | \$15.50     | \$13.50     | \$12.50     | \$12        |
| <b>*6 Colors: Pink (B104P), Orange (B104O), Yellow (B104Y), Green (B104G), Blue (B104B), Violet (B104V)</b> |              |             |             |             |             |             |
| Small, Clear                                                                                                | B104         | \$16        | \$13        | \$11        | \$10        | \$9.50      |
| Small, Black                                                                                                | B105         | \$16        | \$13        | \$11        | \$10        | \$9.50      |

**Note:** The "Small" size is also available in the new "Dura" material & "Small-Thin". See page 5.



## MEDIUM - FOR STANDARD MINI-GELS

**Dimensions (LxWxH):** 9.1 x 6.6 x 2.9 cm • 3 5/8 x 2 5/8 x 1 1/8 inches

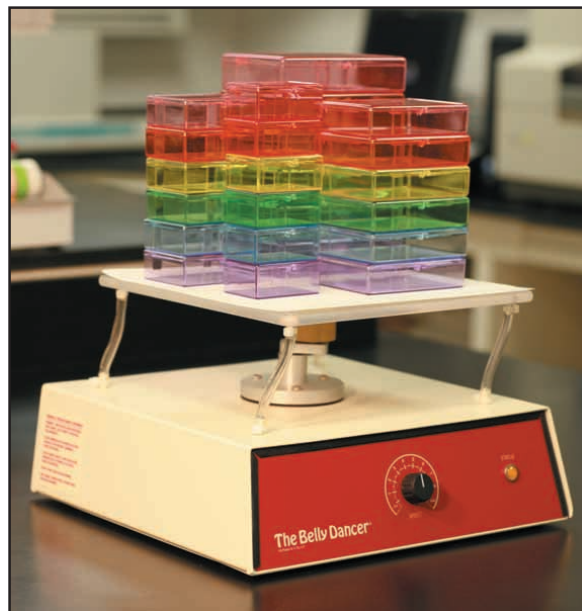
**Gel Apparatuses:** Bio-Rad Mini-PROTEAN 3, GE Mighty Small SE250  
Biometra Mini-V 8\*10, Lonza PAGER (8.3 x 7.1)

**Solution Volumes:** 2 mL (minimum) 3 - 5 mL (recommended)

### Price each, for quantity ordered

| ITEM                                                                                                        | CAT. No.     | 1-4          | 5-9         | 10-19       | 20-49       | 50+         |
|-------------------------------------------------------------------------------------------------------------|--------------|--------------|-------------|-------------|-------------|-------------|
| <b>Medium Rainbow Set (all 6 colors)</b>                                                                    | <b>B101S</b> | <b>\$102</b> | <b>\$82</b> | <b>\$70</b> | <b>\$63</b> | <b>\$60</b> |
| Medium, one specific color (below*)                                                                         | B101?*       | \$19.50      | \$16.50     | \$14.50     | \$13.50     | \$13        |
| <b>*6 Colors: Pink (B101P), Orange (B101O), Yellow (B101Y), Green (B101G), Blue (B101B), Violet (B101V)</b> |              |              |             |             |             |             |
| Medium, Clear                                                                                               | B101         | \$17         | \$14        | \$12        | \$11        | \$10.50     |
| Medium, Black (Opaque)                                                                                      | B103         | \$17         | \$14        | \$12        | \$11        | \$10.50     |
| Medium, Opaque Green                                                                                        | B103G        | \$17         | \$14        | \$12        | \$11        | \$10.50     |
| Medium, Opaque Silver                                                                                       | B103A        | \$17         | \$14        | \$12        | \$11        | \$10.50     |

**Notes:** The "3-Sectional-Medium" (B101-3S for clear; B103-3S for black), the "Dura" (B101-D for clear; B103-D for black) version, and the "Medium-Thin" (B101-T for clear; B103-T for black) are also available. See page 4.



**New! MINI SQUARE** is now available in **Rainbow Colors** as well. See page 5 for details and prices.

## LARGE - FOR LARGER MINI-GELS

**Dimensions (LxWxH):** 11.7 x 9.0 x 2.9 cm • 4 5/8 x 3 9/16 x 1 1/8 inches

**Gel Apparatuses:** Invitrogen/Novex XCell SureLock Mini, GE Mighty Small SE260  
Lonza PAGER (8.3 x 8.1), Owl Puffin P81, Owl Penguin P8DS

**Solution Volumes:** 3.5 mL (minimum) 6 - 10 mL (recommended)

### Price each, for quantity ordered

| ITEM                                                                                                        | CAT. No.     | 1-4          | 5-9          | 10-19       | 20-49       | 50+         |
|-------------------------------------------------------------------------------------------------------------|--------------|--------------|--------------|-------------|-------------|-------------|
| <b>Large Rainbow Set (all 6 colors)</b>                                                                     | <b>B107S</b> | <b>\$137</b> | <b>\$110</b> | <b>\$95</b> | <b>\$87</b> | <b>\$83</b> |
| Large, one specific color (below*)                                                                          | B107?*       | \$27.50      | \$22.50      | \$19.50     | \$18.50     | \$17.50     |
| <b>*6 Colors: Pink (B107P), Orange (B107O), Yellow (B107Y), Green (B107G), Blue (B107B), Violet (B107V)</b> |              |              |              |             |             |             |
| Large, Clear                                                                                                | B107         | \$25         | \$20         | \$17        | \$16        | \$15        |
| Large, Black                                                                                                | B108         | \$25         | \$20         | \$17        | \$16        | \$15        |

**Notes:** The "Large" size is also available in the new "Dura" material (see page 9). In addition, a newer size, the "Mini Square", is also available that is 8.6 x 8.6 cm and uses 30% less volume than "Large" (see page 5).

## EXTRA LARGE - FOR LARGER PROTEIN GELS

**Dimensions (LxWxH):** 15.4 x 10.4 x 3.6 cm • 6 1/16 x 4 1/16 x 1 1/2 inches

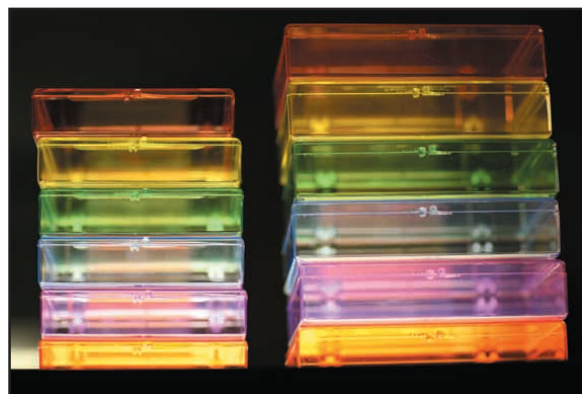
**Gel Apparatuses:** Bio-Rad Criterion, Invitrogen/Novex XCell SureLock Midi / E-PAGE

**Solution Volumes:** 9 mL (minimum) 11 - 15 mL (recommended)

### Price each, for quantity ordered

| ITEM                                                                                                        | CAT. No.     | 1-4          | 5-9          | 10-19        | 20-49        | 50+          |
|-------------------------------------------------------------------------------------------------------------|--------------|--------------|--------------|--------------|--------------|--------------|
| <b>Extra Large Rainbow Set (all 6 colors)</b>                                                               | <b>B109S</b> | <b>\$168</b> | <b>\$136</b> | <b>\$115</b> | <b>\$105</b> | <b>\$100</b> |
| Extra Large, one specific color (below*)                                                                    | B109?*       | \$31.50      | \$27.50      | \$24.50      | \$22.50      | \$20.50      |
| <b>*6 Colors: Pink (B109P), Orange (B109O), Yellow (B109Y), Green (B109G), Blue (B109B), Violet (B109V)</b> |              |              |              |              |              |              |
| Extra Large, Clear                                                                                          | B109         | \$29         | \$25         | \$22         | \$20         | \$18         |
| Extra Large, Black                                                                                          | B110         | \$29         | \$25         | \$22         | \$20         | \$18         |

**Note:** The "Extra Large" size is also available in the new "Dura" material. See page 9.



So far, only these 5 sizes are offered in colors. If you are interested in other sizes in color, let us know. All dimensions given for the PerfectWestern® containers are container inside dimensions.

**800-311-8260**  
For Orders or Tech Support



[www.GenHunter.com](http://www.GenHunter.com)

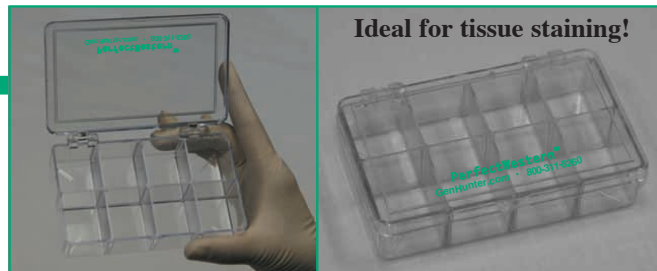
**See the Actual Sizes of  
all 37 containers on  
pages 14 and 15**

# TINY COMPARTMENTED CONTAINER FOR STAINING TISSUES OR VERY SMALL RECTANGULAR MEMBRANES

New...  
Size

## 8-SECTIONAL-SUPERSMALL - FOR TISSUE STAINING OR TINY STRIPS

| ITEM                                                                               | CAT. NO. | 1-4                                                 | 5-9  | 10-19 | 20-49 | 50+  |  |
|------------------------------------------------------------------------------------|----------|-----------------------------------------------------|------|-------|-------|------|--|
| 8-Sectional-SuperSmall, Clear                                                      | B156     | \$46                                                | \$39 | \$33  | \$29  | \$27 |  |
| 8-Sectional-SuperSmall, Black                                                      | B157     | Black not yet available. Let us know if interested. |      |       |       |      |  |
| Well Dimensions (LxWxH): 8 wells each 3.2 x 2.6 x 3 cm • 1 1/4 x 1 x 1 3/16 inches |          |                                                     |      |       |       |      |  |
| Overall Dimensions (LxWxH): 11.1 x 6.7 x 3 cm • 4 3/8 x 2 5/8 x 1 3/16 inches      |          |                                                     |      |       |       |      |  |



## SQUARE CONTAINER

### SQUARE - FOR LARGER MINI PROTEIN GELS

| ITEM                                                                              | CAT. NO. | 1-4  | 5-9  | 10-19 | 20-49 | 50+  |
|-----------------------------------------------------------------------------------|----------|------|------|-------|-------|------|
| Square, Clear                                                                     | B119     | \$30 | \$25 | \$22  | \$20  | \$18 |
| Square, Black                                                                     | B120     | \$30 | \$25 | \$22  | \$20  | \$18 |
| Dimensions (LxWxH): 11.7 x 11.7 x 3.5 cm • 4 9/16 x 4 9/16 x 1 3/8 inches         |          |      |      |       |       |      |
| Note: The "Large" container has the same length (11.7 cm), but is only 9 cm wide. |          |      |      |       |       |      |



## Historical Scientific Feature:

# Who really invented the Western blot?

Was it Neal Burnette (at Fred Hutchinson)?

Was it Harry Towbin's group (in Switzerland)?

Was it George Stark's group (at Stanford)?

1979 certainly was a busy year in the development of western blotting (also called "Protein blotting" or "Protein immunoblot").

They were all working hard and trying to publish.

But who deserves the real credit?

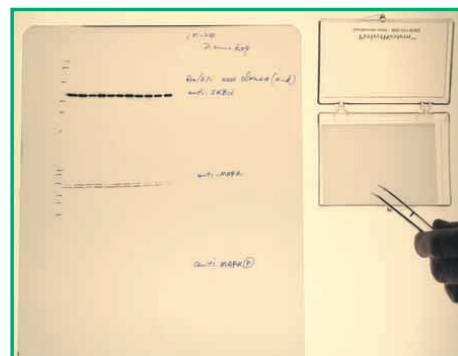
Most researchers know western blotting evolved from Southern blotting (Ref 1), invented by Edwin Southern at University of Edinburgh in 1975, then northern blotting (Ref 2), invented by George Stark's Stanford group in 1977.

All 3 groups of researchers in Seattle, Stanford, and Basel seem to have been working independently from 1977 to 1979 on a better method to detect proteins using antibodies. They all attempted to publish in 1979 and certainly all deserve some credit for the development of the western blot. But who should we cite as the real inventor? This question is not as easy to answer, but it is a very interesting story.

Read the whole story at: <http://www.WesternBlotInventor.com>

### References:

- 1) Southern, EM: Detection of specific sequences among DNA fragments separated by gel electrophores. (1975) *Journal of Molecular Biology* 98:503-517.
- 2) Alwine JC, Kemp DJ, Stark GR: Method for detection of specific RNAs in agarose gels by transfer to diazobenzyloxymethyl-paper and hybridization with DNA probes. (1977) *PNAS* 74:5350-5354.
- 3) Renart J, Reiser J, Stark GR: Transfer of proteins from gels to diazobenzyloxymethyl-paper and detection with antisera: a method for studying antibody specificity and antigen structure. (1979) *PNAS* 76:3116-3120.
- 4) Towbin H, Staehelin T, Gordon J: Electrophoretic transfer of proteins from polyacrylamide gels to nitrocellulose sheets: procedure and some applications. (1979) *PNAS* 76:4350-4354.
- 5) Burnette WN: "Western blotting": electrophoretic transfer of proteins from sodium dodecyl sulfate-polyacrylamide gels to unmodified nitrocellulose and radiographic detection with antibody and radioiodinated protein A. (1981) *Analytical Biochemistry* 112:195-203.





# PerfectFilm™ for Western Blotting

## High-Quality Autoradiography Film for Chemiluminescence

- Standard High Contrast, Double Emulsion Blue Film
- High Sensitivity with Low Background
- Optimized for ECL (Enhanced Chemiluminescence)
- Beautiful, Publication Quality Images
- Also works well with  $^{14}\text{C}$ ,  $^{32}\text{P}$ ,  $^{33}\text{P}$ ,  $^{35}\text{S}$ ,  $^{125}\text{I}$
- Film available in 2 sizes:

**5 x 7 inches** (12.7 x 17.8 cm)

**8 x 10 inches** (20.3 x 25.4 cm)



| PerfectFilm™  |            |          |       |  |
|---------------|------------|----------|-------|--|
| Size          | Quantity   | Cat. No. | Price |  |
| 5 x 7 inches  | 100 sheets | B557     | \$54  |  |
| 8 x 10 inches | 100 sheets | B581     | \$81  |  |

### Why spend several hundred dollars on film for Western blots?

With tight budgets in these difficult economic times, every lab needs to be price conscious. GenHunter's PerfectFilm™ is a high-quality, especially sensitive blue autoradiography film that is ideal for many applications including Western blots using enhanced chemiluminescence (ECL) substrates for horseradish peroxidase (HRP) or alkaline phosphatase (AP). **Equivalent film at 3 - 5X cheaper prices!**

Our PerfectFilm™ has excellent contrast with low background and is coated on both sides for improved consistency and overall performance. It produces sharp, bright, publication-quality images. It is compatible with manual or automatic processing methods and can be used with calcium tungstate or blue-emitting rare-earth screens.



Get beautiful Western blots every time

**Applications:** Western, Northern, and Southern blotting; Sequencing; Gel-shift assays (EMSA)

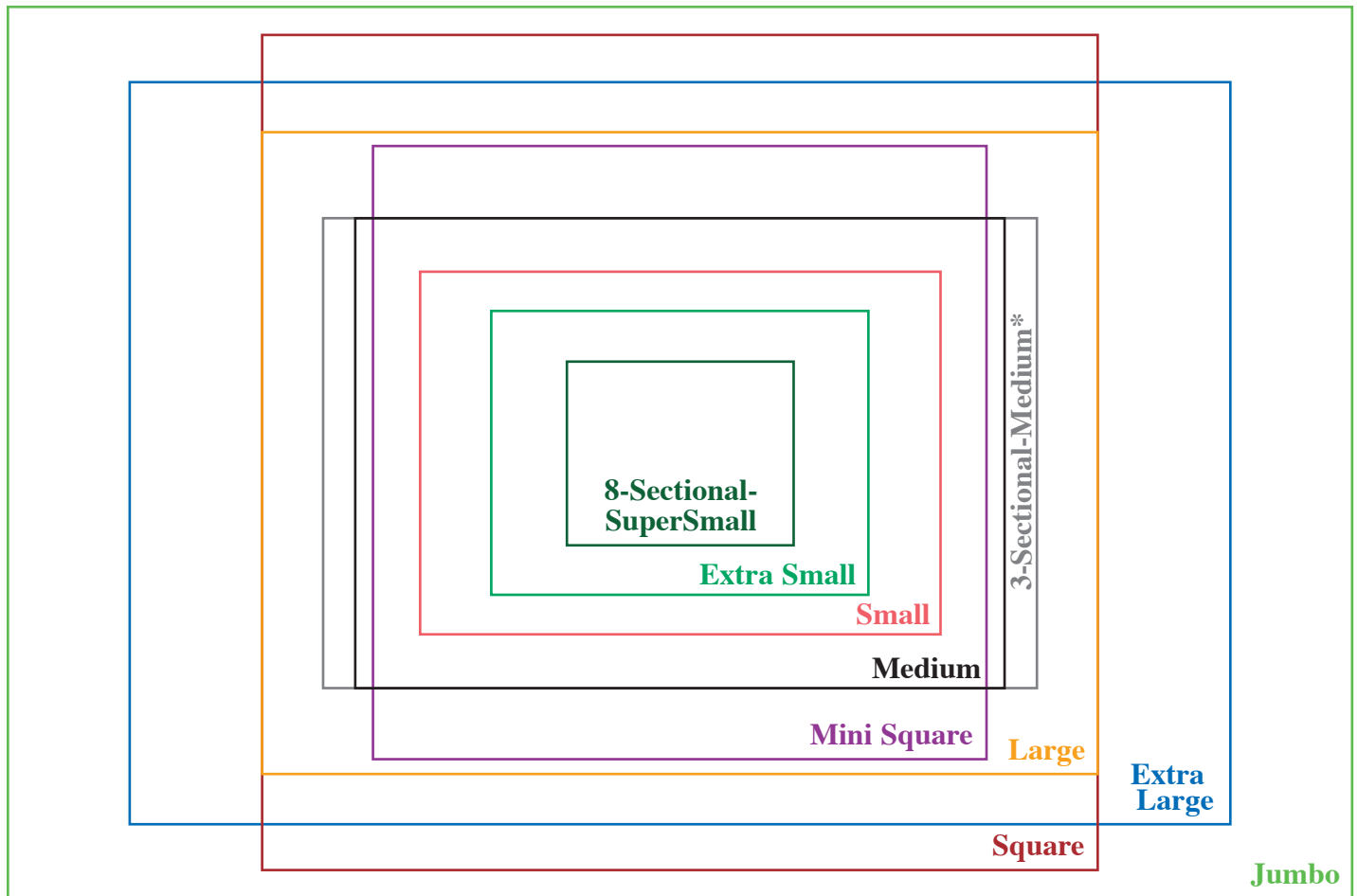
**Packaging:** In lined, light-safe dispenser boxes with 100 sheets per box, interleaved

**Shelf life:** 2 years

**Storage:** In cool, dry place

# Actual Sizes\*\*\* of our 37 P

## 14 RECTANGULAR CONTAINERS



\* The "3-Sectional-Medium" container (above) has 3 identical compartments, each 10 x 6.6 cm (3 15/16 x 2 5/8 inches), the same width and just slightly longer than the "Medium" (most popular size).

Enormo

**Important Note: Print pages at 100%. Do not fit to page.**

**As a reference, "Jumbo" should be 18.8 x 12.5 cm.**

**Call or email if you would like to receive an original printed catalog.**

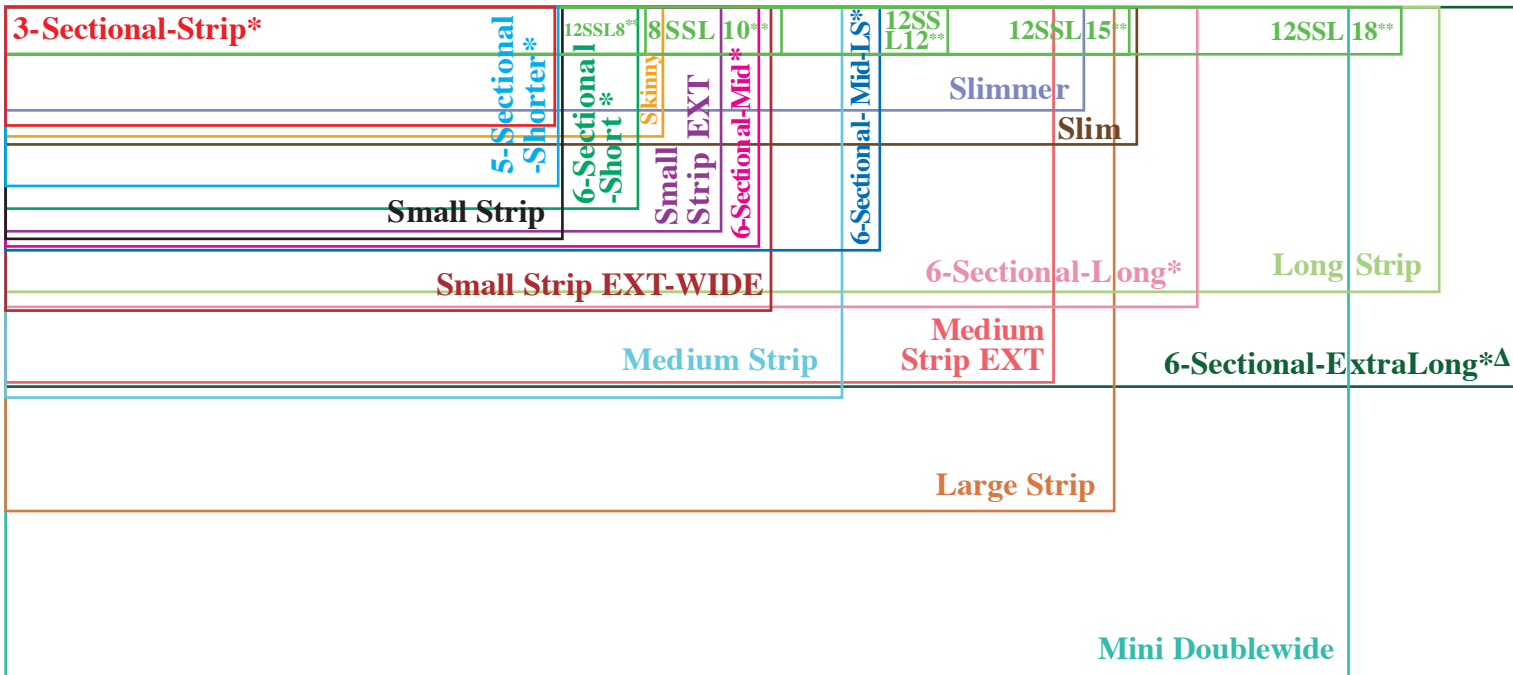
\*\*\*All sizes represented are container inside dimensions.

**Find everything at [www.PerfectWestern.com](http://www.PerfectWestern.com)**



# PerfectWestern® Containers

## 23 CONTAINERS FOR STRIPS



\* The 3-Sectional-Strip container has 3 identical compartments, each 7.3 x 1.6 cm (2 7/8 x 5/8 inches). The red box above only represents one of the compartments.

\* The 5-Sectional-Shorter container has 5 identical compartments, each 7.3 x 2.4cm (2 7/8 x 15/16 inches). The blue box above only represents one of the compartments.

\* The 6-Sectional-Short, -Mid, -Mid-LS, -Long, & -ExtraLong containers each have 6 identical compartments; boxes above only represent one of the compartments.

Δ The 6-Sectional-ExtraLong container's compartments are 21.3 x 5 cm.

\*\* The new 8- and 12-Sectional-Skinny Trays are available in 5 different lengths (8.5, 10.3, 12.5, 14.9, and 18.4 cm). See page 7 for more info.

**Important Note:**  
If printing pages, make sure to do so at 100% so these real-size layouts will be accurate. Do not "fit to page"!

Multi-Wide

Colosso  
Black

Colosso  
Clear

2D Gel Staining Tray

### 23 SIZES FOR STRIPS

| PerfectWestern® Container                                                   | Clear Cat. No. | Black Cat. No. | More info on Page |
|-----------------------------------------------------------------------------|----------------|----------------|-------------------|
| 3-Sectional-Strip                                                           | B106           | B125           | 6                 |
| Skinny Strip                                                                | B170           | B171           | 7                 |
| Small Strip                                                                 | B113           | B114           | 7                 |
| 5-Sectional-Shorter                                                         | B154           | B155           | 6                 |
| 6-Sectional-Short                                                           | B130           | B131           | 6                 |
| Small Strip EXT                                                             | B123           | B124           | 7                 |
| Small Strip EXT-WIDE                                                        | B172           | B173           | 7                 |
| 6-Sectional-Mid                                                             | B132           | B133           | 6                 |
| 6-Sectional-Mid-LS                                                          | B150           | B151           | 6                 |
| Medium Strip                                                                | B115           | B116           | 7                 |
| Medium Strip EXT                                                            | B168           | B169           | 7                 |
| Slimmer                                                                     | B128           | B129           | 7                 |
| Slim                                                                        | B146           | B147           | 7                 |
| 6-Sectional-Long                                                            | B134           | B135           | 6                 |
| Long Strip                                                                  | B126           | B127           | 7                 |
| 6-Sectional-ExtraLong                                                       | B152           | B153           | 6                 |
| Large Strip                                                                 | B117           | B118           | 7                 |
| Mini Doublewide                                                             | B136           | B137           | 7                 |
| **12SSL8, 8SSL10, 12SSL12, 12-SSL15, & 12SSL18 sizes - See page 7 for info. |                |                | 7                 |

### 14 RECTANGULAR SIZES

| PerfectWestern® Container | Clear Cat. No. | Black Cat. No. | More info on Page |
|---------------------------|----------------|----------------|-------------------|
| 8-Sectional-SuperSmall    | B156           | B157           | 12                |
| Extra Small               | B121           | B122           | 5                 |
| Small #+%                 | B104           | B105           | 5                 |
| Medium #+%                | B101           | B103           | 4                 |
| 3-Sectional-Medium        | B101-3S        | B103-3S        | 4                 |
| Mini Square               | B144           | B145           | 5                 |
| Large #%                  | B107           | B108           | 5                 |
| Extra Large #%            | B109           | B110           | 8                 |
| Square                    | B119           | B120           | 12                |
| Jumbo                     | B138           | B139           | 8                 |
| Enormo                    | B111           | B112           | 8                 |
| Multi-Wide                | B148           | B149           | 8                 |
| Colosso                   | B140           | B141           | 8                 |
| 2D Gel Staining Tray      | B142           | B143           | 8                 |

# These sizes also available in 6 transparent colors.  
+ Also available in "Thin" version  
% Also available in "Dura" version

**Get Free Membranes!**  
See page 16 for information

# The PerfectMembrane™ for Westerns

Inexpensive pre-cut membranes that precisely fit our containers

- Save time and materials
- Half the cost of competitors
- Membranes available in **3 sizes**:

**Get Free Membranes!**  
See page 18 for details

**8.3 x 6 cm** (3 1/4 x 2 3/8 inches) - Ideal size for our “Medium” PerfectWestern® container, the most popular size. Designed for standard mini gels such as **Bio-Rad Mini-PROTEAN 3**, etc.

**8.3 x 7.3 cm** (3 1/4 x 2 7/8 inches) - Ideal size for our “Mini Square” container. Designed for longer mini gels such as **Invitrogen/Novex XCell SureLock Mini**, etc.

**New Size** → **13.5 x 8.5 cm** (5 5/16 x 3 11/32 inches) - Ideal size for our “Extra Large” container. Designed for larger precast gels such as **Bio-Rad Criterion™** or **Invitrogen Midi / E-PAGE** gels.

- Membranes available in **4 versions**:

**PVDF, 0.45 µm** Standard PVDF w/ 0.45 µm filter pore size for most proteins (> 20 kDA)

**New Type** → **PVDF, 0.2 µm** 0.2 µm pore size for smaller proteins (< 20 kDA) or Sequencing

**New Type** → **PVDF, Fluor** Optimized for fluorescence; has extremely low background fluorescence; compatible with almost all imagers; 0.45 µm pore size.

**Nitrocellulose** Standard NC w/ 0.45 µm filter pore size for most proteins (> 20 kDA)

Find more information about the 4 different types of membranes on Page 18.



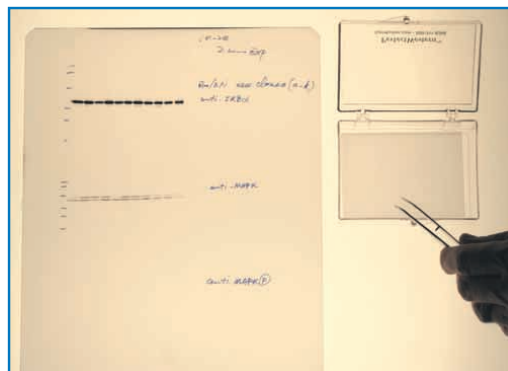
Ideal sizes for Bio-Rad/Invitrogen gels



Now you can leave those rolls behind



Save time & ensure reproducibility



Get beautiful Western blots every time



# Stop cutting your own membranes!

The PerfectMembrane™ is already pre-cut to these perfect sizes

## PerfectMembrane - Medium (8.3 x 6 cm size), use with Bio-Rad mini gel

| Version        | Membranes | Cat. No. | Price* |
|----------------|-----------|----------|--------|
| PVDF, 0.45 µm  | 10        | B301-10  | \$49   |
| PVDF, 0.45 µm  | 25        | B301-25  | \$110  |
| PVDF, 0.45 µm  | 50        | B301-50  | \$187  |
| PVDF, 0.2 µm   | 10        | B302-10  | \$51   |
| PVDF, 0.2 µm   | 25        | B302-25  | \$116  |
| PVDF, 0.2 µm   | 50        | B302-50  | \$198  |
| PVDF, Fluor    | 10        | B303-10  | \$56   |
| PVDF, Fluor    | 25        | B303-25  | \$124  |
| PVDF, Fluor    | 50        | B303-50  | \$211  |
| Nitrocellulose | 10        | B311-10  | \$49   |
| Nitrocellulose | 25        | B311-25  | \$110  |
| Nitrocellulose | 50        | B311-50  | \$187  |



\* Each comes with a free Medium container (\$17 value)

## PerfectMembrane - Mini Square (8.3 x 7.3 cm size), use w/ Invitrogen mini gel

| Version        | Membranes | Cat. No. | Price* |
|----------------|-----------|----------|--------|
| PVDF, 0.45 µm  | 10        | B321-10  | \$59   |
| PVDF, 0.45 µm  | 25        | B321-25  | \$130  |
| PVDF, 0.45 µm  | 50        | B321-50  | \$225  |
| PVDF, 0.2 µm   | 10        | B322-10  | \$62   |
| PVDF, 0.2 µm   | 25        | B322-25  | \$138  |
| PVDF, 0.2 µm   | 50        | B322-50  | \$236  |
| PVDF, Fluor    | 10        | B323-10  | \$67   |
| PVDF, Fluor    | 25        | B323-25  | \$147  |
| PVDF, Fluor    | 50        | B323-50  | \$253  |
| Nitrocellulose | 10        | B331-10  | \$59   |
| Nitrocellulose | 25        | B331-25  | \$130  |
| Nitrocellulose | 50        | B331-50  | \$225  |



\* Each comes with a free Mini Square container (\$21 value)

## PerfectMembrane - Extra Large (13.5 x 8.5 cm size), use w/ larger precast gels such as Bio-Rad Criterion™ or Invitrogen Midi / E-PAGE

| Version        | Membranes | Cat. No. | Price* |
|----------------|-----------|----------|--------|
| PVDF, 0.45 µm  | 10        | B341-10  | \$88   |
| PVDF, 0.45 µm  | 25        | B341-25  | \$192  |
| PVDF, 0.45 µm  | 50        | B341-50  | \$331  |
| PVDF, 0.2 µm   | 10        | B342-10  | \$93   |
| PVDF, 0.2 µm   | 25        | B342-25  | \$204  |
| PVDF, 0.2 µm   | 50        | B342-50  | \$347  |
| PVDF, Fluor    | 10        | B343-10  | \$99   |
| PVDF, Fluor    | 25        | B343-25  | \$217  |
| PVDF, Fluor    | 50        | B343-50  | \$375  |
| Nitrocellulose | 10        | B351-10  | \$88   |
| Nitrocellulose | 25        | B351-25  | \$192  |
| Nitrocellulose | 50        | B351-50  | \$331  |



\* Each comes with a free Extra Large container (\$29 value)

# Get Free Membranes To Try

We know you will love our membranes, so see for yourself by trying them for free.

**8.3 x 6 cm size:** Get Free Pack of 10 “Medium” Membranes (\$49-56 value) if you order 2 Medium Rainbow Sets (B101S), 20 Medium containers (B101/B103), or 1 Medium Rainbow Set and 10 Medium containers.

For 0.45  $\mu\text{m}$  PVDF, use Quote # M-P4-W16;

For 0.2  $\mu\text{m}$  PVDF, use Quote # M-P2-W16;

For Fluorescent PVDF, use Quote # M-PF-W16;

For NC, use Quote # M-NC-W16.

**8.3 x 7.3 cm size:** Get Free Pack of 10 “Mini Square” Membranes (\$59-67 value) if you order 2 Mini Square Rainbow Sets (B144S), 20 Mini Square containers (B144/B145), or 1 MS Rainbow Set and 10 MS containers.

For 0.45  $\mu\text{m}$  PVDF, use Quote # MS-P4-W16;

For 0.2  $\mu\text{m}$  PVDF, use Quote # MS-P2-W16;

For Fluorescent PVDF, use Quote # MS-PF-W16;

For NC, use Quote # MS-NC-W16.

**13.5 x 8.5 cm size:** Get Free Pack of 10 “Extra Large” Membranes (\$88-99 value) if you order 2 Extra Large Rainbow Sets (B109S), 20 Extra Large containers (B109/B110), or 1 Extra Large Rainbow Set & 10 Extra Large containers.

For 0.45  $\mu\text{m}$  PVDF, use Quote # XL-P4-W16;

For 0.2  $\mu\text{m}$  PVDF, use Quote # XL-P2-W16;

For Fluorescent PVDF, use Quote # XL-PF-W16;

For NC, use Quote # XL-NC-W16.

Only orders quoting above Quote # will receive membranes. Offer not applicable to past orders. Offers not combinable with any other discounts. Offer only valid for U.S., Canada, and other countries without distributors. Subject to availability.

## Should I use PVDF or Nitrocellulose (NC)?

GenHunter prefers PVDF for the reasons shown below. However, we know that some customers prefer Nitrocellulose, so offer both types. Advantages of PVDF:

- Better protein retention (Pluskal, *BioTechniques*. 1986, 4:272)
- Much more durable allowing easier handling due to higher mechanical strength
- Higher binding capacity (100-200  $\mu\text{g}/\text{cm}^2$ ) vs. NC (80-100  $\mu\text{g}/\text{cm}^2$ )
- Lower concentrations detected: Requires 5X less antigen, 20X less serum, 10X less secondary antibody (Dalessio, *J. Clin. Micro.* 1992, 30:1005)
- Superior chemical resistance makes it ideal for staining and re-probing

## Technical information for our 4 membrane types:

| Membrane Type           | Cat. No.* | Pore Size          | Insulin binding                | BSA binding                    |
|-------------------------|-----------|--------------------|--------------------------------|--------------------------------|
| PVDF 0.45 $\mu\text{m}$ | B301-50   | 0.45 $\mu\text{m}$ | ~160 $\mu\text{g}/\text{cm}^2$ | ~215 $\mu\text{g}/\text{cm}^2$ |
| PVDF 0.2 $\mu\text{m}$  | B302-50   | 0.2 $\mu\text{m}$  | ~262 $\mu\text{g}/\text{cm}^2$ | ~340 $\mu\text{g}/\text{cm}^2$ |
| PVDF Fluor              | B303-50   | 0.45 $\mu\text{m}$ | ~155 $\mu\text{g}/\text{cm}^2$ | ~205 $\mu\text{g}/\text{cm}^2$ |
| Nitrocellulose          | B311-50   | 0.45 $\mu\text{m}$ | ~80 $\mu\text{g}/\text{cm}^2$  | ~100 $\mu\text{g}/\text{cm}^2$ |

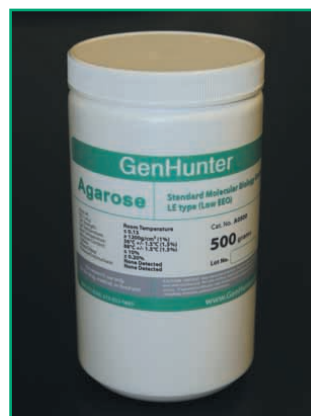
\*Cat. No. is for the “Medium” size with 50 membranes. Check page 17 for other sizes/quantities.

Currently, these are the only 3 PerfectMembrane™ sizes available. Let us know if you want another size or option. Prices listed are only for the U.S., Canada, and other countries without distributors and are subject to change without notice! Find distributors outside the U.S. at [www.GenHunter.com/distributors](http://www.GenHunter.com/distributors)

# GenHunter Agarose (in Powder or Tablets)

## Standard Molecular Biology Grade, LE type (Low EEO)

- Highly purified, general purpose agarose for any application
- **DNase-, RNase-, Endonuclease-, & Protease-free**
- **Low EEO** (electroendosmosis) of  $\leq 0.13$  -m<sub>r</sub> means increased mobility, high resolution, less distortion, and shorter run times
- **Safer:** Free of Organic Solvents
- **Easily soluble** from powder or tablets
- Excellent thermal stability & gel strength
- Low background



GenHunter's Agarose Powder

| Agarose Powder |          |       |
|----------------|----------|-------|
| Size           | Cat. No. | Price |
| 25 g           | A0025    | \$38  |
| 100 g          | A0100    | \$108 |
| 500 g          | A0500    | \$240 |

| Agarose Tablets (0.5 g each)                                                     |          |       |
|----------------------------------------------------------------------------------|----------|-------|
| Pre-weighed tablets in easy blister packs.<br>No weighing, no mess = time saved! |          |       |
| Size                                                                             | Cat. No. | Price |
| 100 g (200 tablets)                                                              | A7100    | \$130 |
| 500 g (1000 tablets)                                                             | A7500    | \$395 |



GenHunter's Agarose Tablets

### Technical Information

**Store at:** Room temperature

**EEO (-m<sub>r</sub>):**  $\leq 0.13$

**Gel Strength:**  $\geq 1200$  g/cm<sup>2</sup> (at 1%)

**Gel Strength:**  $\geq 2500$  g/cm<sup>2</sup> (at 1.5%)

**Gelling Temperature:** 34.5° - 37.5° C (at 1.5%)

**Melt Temperature:** 86.5° - 89.5° C (at 1.5%)

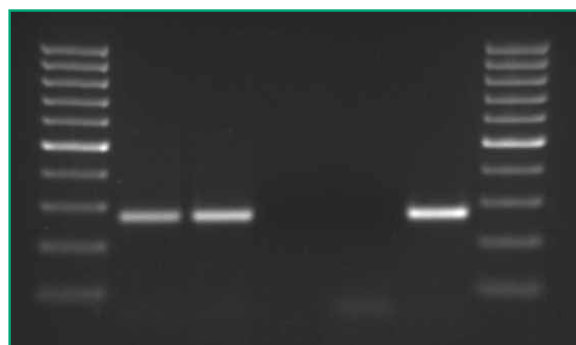
**Moisture Content:**  $\leq 10\%$

**Sulfate Content:**  $\leq 0.20\%$

**Applications:** Nucleic acids (DNA, RNA),  
Proteins, etc.

*For research use only.*

*Not for drug, medical, or food use.*



GenHunter's Agarose used in Cipro QC expt



Would you like to save even more money on Westerns?

Use our PerfectWestern® Containers with the Best Shakers & Rockers on the Market!

## Orbital Shakers

The Belly Dancer®

and <sup>the</sup> belly button®



*The unique 3D orbital motion of these shakers is ideal for Westerns, Northerns, Southern, & other mixing applications.*

## Rocker

The PerfectRocker™



*Variable Tilt & Speed*



*The PerfectRocker™ offers the standard back-and-forth rocking motion preferred by many labs. Useful for a wide variety of applications.*

*Accessories are available for the Belly Dancer, Belly Button, and PerfectRocker. See page 22.*

# Features of the units:

## *Sensible in Design, Simple in Operation*

- Gentle, yet thorough mixing & washing action.
- Extremely quiet operation.
- Wide operating temperature range: 0°C to 60°C allows benchtop, cold room, or incubator applications.
- Chemically resistant materials. Stainless steel and anodized aluminum parts. High bake ester finish on case.
- Removable, washable non-skid platform mat.
- Variable speed control:
  - Belly Dancer/Button: 0 to 100 RPM
  - PerfectRocker: 2 to 30 RPM (4 to 60 tilts/min)
- Simple, variable pitch control:
  - Belly Dancer/Button: level motion to 8° pitch.
  - PerfectRocker: 0 to 30° tilt angle.
- No cogging at slow speeds.
- Lightweight for easy mobility:
  - Belly Dancer: 16 lbs.
  - Belly Button: 5 lbs.
  - PerfectRocker: 8 lbs.
- Max load on units:
  - Belly Dancer: 20 lbs.
  - Belly Button: 5 lbs.
  - PerfectRocker: 8 lbs.
- Warranty (Parts and Labor):
  - Belly Dancer/Button: One Year
  - PerfectRocker: Two Years
- Simple, durable, trouble-free construction allows these workhorses to last forever!

# Dimensions (L x W x H):

**Belly Dancer:** Platform: 12 x 12 inches  
Overall Unit: 15 x 15 x 9 inches

**Belly Button:** Platform: 7 x 7 inches  
Overall Unit: 8 x 8 x 4 3/4 inches

**PerfectRocker:** Platform: 14 x 12 inches  
Overall Unit: 14 x 12 x 8 inches



The Belly Dancer can carry up to a 20 lb. load.



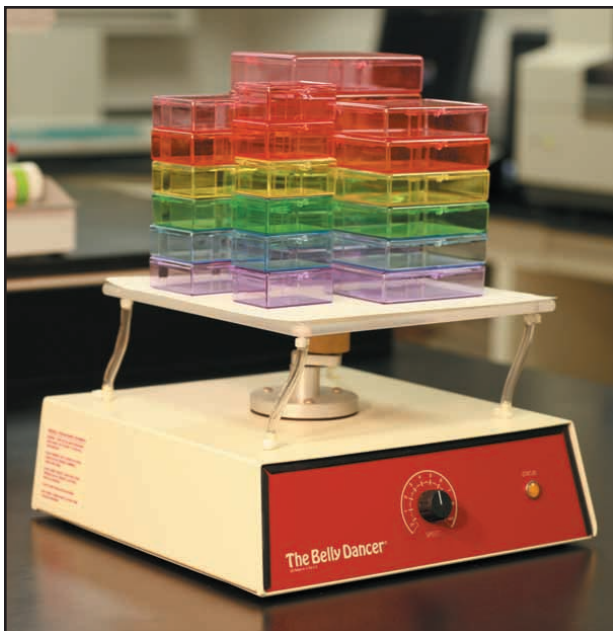
Easily adjust platform pitch from level to 8°.



The unique motion of the Belly Dancer and Belly Button allow separation and thorough washing of multiple membranes in a single PerfectWestern® container.



The Belly Button is small enough to fit inside incubators, refrigerators, or hoods for cell culture, retroviral infection, and 96 well plate assays. The thin, flat cord reaches outlets w/o damaging gasket seals.



## Advantages of the Belly Dancer®/Button® shakers versus a standard 2D shaker?

The unique, undulating motion of these shakers provides optimal movement for the multiple stainings and washings involved in gel, blotting, and cell culture techniques. Agitation is gentler but more efficient than the action of ordinary shakers. The smooth combination of vertical and horizontal orbital motion allows for more rapid exchange of solvents, especially at low speeds, in applications like staining and de-staining gels and assures lower background in applications such as blotting. Consisting of an orbiting platform flexibly anchored at four corners, the platform motion is an extremely effective combination of rocking platform mixer and orbital shaker. Other shakers do not have the versatility and range of application.

Whether you need gentle, continuous agitation or vigorous mixing, these shakers are your instruments of choice.

# Belly Dancer® and Belly Button® Accessories



**The Belly Dancer® Finger Mat (C105)**



**The Belly Button® Finger Mat (C301)**



**The Belly Dancer® Nesting Platform Extender (C106)**

Makes Platform 18 x 18" (125% more space)



**The Belly Dancer® 2nd Story Platform Kit (C107)**

[4 1/2" separation between platforms]

## PerfectRocker™ Accessories



**The PerfectRocker™ Finger Mat (C450)**



**The PerfectRocker™ 2nd Story Platform Kit (C451)**

[3" separation between platforms; 4 1/2" with "Platform Lifters" (C452)]



# Pricing for Shakers and Rockers

## Belly Dancer/Button Orbital Shakers

**Cat. No. Price**

The Belly Dancer® Lab Shaker (115V) - For U.S.A. C101 \$1625

The Belly Dancer® Lab Shaker (230V) - For INTL C102 \$1625

The Belly Button® Small Lab Shaker (100-230V) C201 \$805

New Lower Price

New Lower Price

## Belly Dancer/Button Accessories (See page 22 for images)

The Belly Dancer® Finger Mat (12 x 12") C105 \$162

The Belly Dancer® Nesting Platform Extender (18 x 18") C106 \$270

The Belly Dancer® 2nd Story Platform Kit (12 x 12") C107 \$270

The Belly Button® Finger Mat (7 x 7") C301 \$70

## PerfectRocker™

**Cat. No. Price**

The PerfectRocker™ (115V) - For U.S.A. C401 \$740

The PerfectRocker™ (230V) - For INTL C402 \$740

## PerfectRocker™ Accessories (See page 22 for images)

The PerfectRocker™ Finger Mat (12 x 12") C450 \$49

The PerfectRocker™ 2nd Story Platform Kit (14 x 12") C451 \$107

The PerfectRocker™ 2nd Story Platform Lifters C452 \$38

**Order any combination of two or more shakers/rockers and get 5% off! (Use Quote # Shaker-W16).**

Only orders quoting above Quote # will be accepted. Offers not applicable to past orders. Offer not combinable with any other discounts. Offer only valid for U.S. and Canadian customers. Discount applies to product cost only. Subject to availability. Shipping costs are separate.

# Single-Channel PerfectPipettor™

## Features:

- Beautifully designed, precise, durable, and affordable
- Uses standard tips
- Autoclavable
- Continuously adjustable volume increments
- Individually calibrated to ISO 8655 (certificate provided)
- In-lab calibration tool provided
- One Year Warranty, Parts and labor
- **Money-back Satisfaction Guarantee for 1 month for any reason**

## Six Popular Sizes:

2, 10, 20, 100, 200, and 1000 µL

## Prices:

**Promotional Price: \$108 each**  
(See details below) **OR**  
**\$410 per set of 4**



With tight budgets in these difficult economic times, every lab needs to be price conscious. Building on a tradition of 20 years of innovative and money-saving products, GenHunter introduced the PerfectPipettors™ in 2009.

The PerfectPipettors™ are manufactured with the latest liquid dispensing technologies featuring high precision and durability but are over 65% cheaper than competitors. The NeverWear™ seals inside ensure that these PerfectPipettors™ will outlast any others on the market.

| Products                                                | Cat. No.   | List Price | Promotional Price |
|---------------------------------------------------------|------------|------------|-------------------|
| PerfectPipettor™ 2 µL                                   | D0002      | \$174      | <b>\$108</b>      |
| PerfectPipettor™ 10 µL                                  | D0010      | \$174      | <b>\$108</b>      |
| PerfectPipettor™ 20 µL                                  | D0020      | \$174      | <b>\$108</b>      |
| PerfectPipettor™ 100 µL                                 | D0100      | \$174      | <b>\$108</b>      |
| PerfectPipettor™ 200 µL                                 | D0200      | \$174      | <b>\$108</b>      |
| PerfectPipettor™ 1000 µL                                | D1000      | \$174      | <b>\$108</b>      |
| PerfectPipettor™ Set, 4 Standard Sizes (no 2 or 100 µL) | D1Set      | \$560      | <b>\$410</b>      |
| PerfectPipettor™ Set, 4 Standard Sizes plus Stand       | D1Set-WS   | \$620      | <b>\$455</b>      |
| PerfectPipettor™ Set, 5 Sizes (no 2 µL size)            | D1Set-5    | \$670      | <b>\$500</b>      |
| PerfectPipettor™ Set, 5 Sizes plus Stand                | D1Set-5-WS | \$725      | <b>\$545</b>      |
| PerfectPipettor™ Set, All 6 Sizes                       | D1Set-6    | \$805      | <b>\$595</b>      |
| PerfectPipettor™ Set, All 6 Sizes plus Stand            | D1Set-6-WS | \$865      | <b>\$640</b>      |
| PerfectPipettor™ Stand (holds 7)                        | D1Stand    | \$140      | <b>\$89</b>       |

Replacement Parts including shafts, O-rings, NeverWear seals, etc. are also available.

## Promotional Pricing: *Quote # PP16-W Expires December 31, 2016*

Only orders quoting above Quote # will receive discount. Not applicable to past orders. Offers not combinable with any other discounts. Prices only valid for U.S., Canada, and other countries without distributors - other international customers should contact our distributors ([www.GenHunter.com/distributors](http://www.GenHunter.com/distributors)) for pricing. Subject to availability. Shipping costs are separate.

## Specifications:

|                  | Volume Range  | Accuracy        | Repeatability |
|------------------|---------------|-----------------|---------------|
| 2 µL pipettor    | 0.2 - 2 µL    | +/- 12.0 - 1.5% | 6.0 - 0.7%    |
| 10 µL pipettor   | 0.5 - 10 µL   | +/- 2.5 - 1.0%  | 1.25 - 0.4%   |
| 20 µL pipettor   | 2 - 20 µL     | +/- 5.0 - 1.0%  | 1.5 - 0.3%    |
| 100 µL pipettor  | 10 - 100 µL   | +/- 2.5 - 0.8%  | 0.7 - 0.15%   |
| 200 µL pipettor  | 20 - 200 µL   | +/- 2.5 - 0.8%  | 1.0 - 0.15%   |
| 1000 µL pipettor | 100 - 1000 µL | +/- 1.5 - 0.8%  | 0.3 - 0.15%   |



**PerfectPipettor™ Set  
Plus Stand**

# Single-Channel PerfectPipettor™ H

## Features:

- Lighter than standard pipets for decreased fatigue
- Beautifully designed, precise, durable, and affordable
- Uses standard tips
- Continuously adjustable volume increments
- Over 100,000 pipettings without the need for calibration
- Individually calibrated to ISO13485 standards; CE approved
- In-lab calibration tool provided
- One Year Warranty, Parts and labor
- **Money-back Satisfaction Guarantee for 1 month for any reason**

## Six Popular Sizes:

2, 10, 20, 100, 200, and 1000 µL

## Prices:

**Promotional Price: \$99 each**  
 (See details below) **OR**  
**\$380 per set of 4**



PerfectPipettor™ H Set w/ Stand

The PerfectPipettor™ H pipettes are manufactured with the latest liquid dispensing technologies featuring high precision and durability but are over 70% cheaper than competitors. They are lighter than the standard PerfectPipettors™ which reduces fatigue and hand strain. The NeverWear™ seals inside ensure they will maintain accurate calibration, tested to be over 100,000 pipettings.

| Products                                                   | Cat. No.    | List Price | Promotional Price |
|------------------------------------------------------------|-------------|------------|-------------------|
| PerfectPipettor™ H 2 µL                                    | DH0002      | \$174      | <b>\$99</b>       |
| PerfectPipettor™ H 10 µL                                   | DH0010      | \$174      | <b>\$99</b>       |
| PerfectPipettor™ H 20 µL                                   | DH0020      | \$174      | <b>\$99</b>       |
| PerfectPipettor™ H 100 µL                                  | DH0100      | \$174      | <b>\$99</b>       |
| PerfectPipettor™ H 200 µL                                  | DH0200      | \$174      | <b>\$99</b>       |
| PerfectPipettor™ H 1000 µL                                 | DH1000      | \$174      | <b>\$99</b>       |
| PerfectPipettor™ H Set, 4 Standard Sizes (no 2 or 100µL)   | DH1Set      | \$560      | <b>\$380</b>      |
| PerfectPipettor™ H Set, 4 Standard Sizes <b>plus Stand</b> | DH1Set-WS   | \$620      | <b>\$420</b>      |
| PerfectPipettor™ H Set, 5 Sizes (no 2µL size)              | DH1Set-5    | \$670      | <b>\$450</b>      |
| PerfectPipettor™ H Set, 5 Sizes <b>plus Stand</b>          | DH1Set-5-WS | \$725      | <b>\$490</b>      |
| PerfectPipettor™ H Set, All 6 Sizes                        | DH1Set-6    | \$780      | <b>\$530</b>      |
| PerfectPipettor™ H Set, All 6 Sizes <b>plus Stand</b>      | DH1Set-6-WS | \$840      | <b>\$570</b>      |
| PerfectPipettor™ H Stand (holds 8)                         | DH1Stand    | \$140      | <b>\$78</b>       |

Replacement Parts including shafts, O-rings, NeverWear seals, etc. are also available.

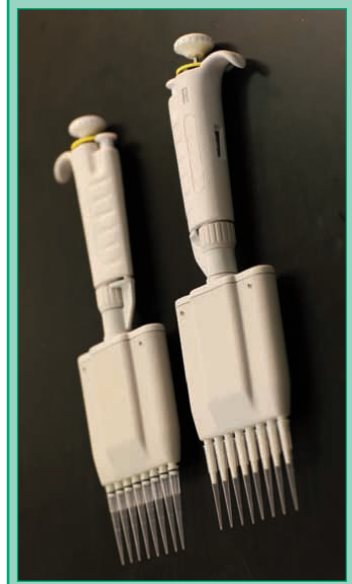
## Promotional Pricing: *Quote # PP16-W Expires December 31, 2016*

Only orders quoting above Quote # will receive discount. Not applicable to past orders. Offers not combinable with any other discounts. Prices only valid for U.S., Canada, and other countries without distributors - other international customers should contact our distributors ([www.GenHunter.com/distributors](http://www.GenHunter.com/distributors)) for pricing. Subject to availability. Shipping costs are separate.

## Specifications:

|                  | Volume Range  | Accuracy        | Repeatability |
|------------------|---------------|-----------------|---------------|
| 2 µL pipettor    | 0.2 - 2 µL    | +/- 15.0 - 1.8% | 8.0 - 1.0%    |
| 10 µL pipettor   | 1 - 10 µL     | +/- 3.0 - 1.2%  | 1.5 - 0.5%    |
| 20 µL pipettor   | 2 - 20 µL     | +/- 6.0 - 1.2%  | 2.0 - 0.4%    |
| 100 µL pipettor  | 10 - 100 µL   | +/- 2.0 - 0.8%  | 0.6 - 0.2%    |
| 200 µL pipettor  | 20 - 200 µL   | +/- 1.2 - 0.8%  | 0.5 - 0.2%    |
| 1000 µL pipettor | 100 - 1000 µL | +/- 1.8 - 0.8%  | 0.4 - 0.2%    |

**Multi-Channel  
Versions  
Also Available  
See Next Page**





# Multi-Channel PerfectPipettor™

## Features:

- Beautifully designed, precise, durable, and affordable
- 8- and 12-Channel Pipettors
- Uses standard tips
- Autoclavable
- Continuously adjustable volume increments



## Two Popular Sizes:

20 and 200 µL

One Year Warranty, Parts and labor.

Money-back Satisfaction Guarantee for 1 month for any reason.

| Products                           | Cat. No. | List Price | Promotional Price |
|------------------------------------|----------|------------|-------------------|
| 8-Channel PerfectPipettor™ 20 µL   | D8020    | \$460      | <b>\$330</b>      |
| 8-Channel PerfectPipettor™ 200 µL  | D8200    | \$460      | <b>\$330</b>      |
| 12-Channel PerfectPipettor™ 20 µL  | D12020   | \$522      | <b>\$365</b>      |
| 12-Channel PerfectPipettor™ 200 µL | D12200   | \$522      | <b>\$365</b>      |



**Promotional Deal: Quote # MCPP16-W**  
**Expires December 31, 2016**

Only orders quoting above Quote # will receive discount. Not applicable to past orders. Offers not combinable with any other discounts. Prices only valid for U.S., Canada, and other countries without distributors - other international customers should contact our distributors for pricing ([www.GenHunter.com/distributors](http://www.GenHunter.com/distributors)). Subject to availability. Shipping costs are separate.

## Specifications for 8 and 12-channel pipettors:

|                 | Volume Range | Accuracy       | Repeatability |
|-----------------|--------------|----------------|---------------|
| 20 µL pipettor  | 2 - 20 µL    | +/- 6.0 - 1.2% | 2.0 - 0.4%    |
| 200 µL pipettor | 20 - 200 µL  | +/- 1.8 - 1.0% | 0.6 - 0.2%    |

**Single-Channel Versions**  
**Also Available**  
**See Previous Pages**



# Cell Culture Products

## Ciprofloxacin Hydrochloride (Cipro) for Mycoplasma elimination

Mycoplasma contamination is a major problem in cell culture in biomedical and biopharmaceutical research, with rates near 15-30%. While there is no method for visual confirmation of mycoplasma, contamination has serious effects on key characteristics and functions of cells, thus compromising any research done with them. Cipro (ciprofloxacin hydrochloride) is the standard antibiotic for rapid and efficient decontamination.

**GenHunter offers 99.5% pure Cipro in either a ready-to-use 1000X solution or powder form.**

### Applications:

- Treatment of mycoplasma-infected cell lines
- Decontamination of visible Pen-Strep resistant bacteria
- Precautionary treatment of newly acquired cell lines
- Precautionary treatment during all transfections to prevent contamination from the plasmid

**Purity: 99.5% pure**

### Ciprofloxacin Hydrochloride (Ready-to-Use Sterile Solution, 1000X, 10 mg/mL)

| Qty.      | Cat. No.  | Amount of media treated | Price |
|-----------|-----------|-------------------------|-------|
| 1 mL      | Q902-1ML  | up to 1 L               | \$29  |
| 10 X 1 mL | Q902-10ML | up to 10 L              | \$183 |
| 20 X 1 mL | Q902-20ML | up to 20 L              | \$326 |
| 50 mL     | Q902-50ML | up to 50 L              | \$473 |



### Ciprofloxacin Hydrochloride (Powder)

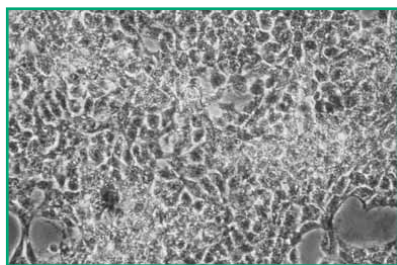
| Qty. | Cat. No. | Amount of media treated | Price |
|------|----------|-------------------------|-------|
| 1 g  | Q901-1G  | up to 100 L             | \$72  |
| 5 g  | Q901-5G  | up to 500 L             | \$165 |

**Note:** If mixing yourself, liquid must be filter-sterilized before use.

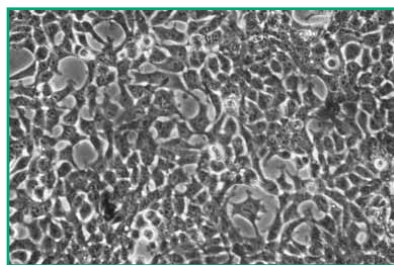


**Larger packaging sizes for both available upon request**

## Complete Mycoplasma elimination in 2 weeks!



**Before:** Cells with mycoplasma contamination (20X magnification)



**After 2 weeks:** Cells cured of mycoplasma contamination with Cipro (20X magnification)

**FOR RESEARCH USE ONLY**

### More Cell Culture products:

- Mycoplasma PCR Detection Kit
- 4 Cell Lines
- co-transfection vectors

**See next page**

**Reference:** Schmitt, K. et al: A safe and efficient method for elimination of cell culture mycoplasmas using ciprofloxacin. *Journal of Immunology Methods*. 1988. 109:17-25.

# More Cell Culture Products

## MycoHunter™ Mycoplasma Detection Kit

CAT. No.: Q909 (25 Rxns) PRICE: \$86  
 CAT. No.: Q910 (100 Rxns) PRICE: \$171

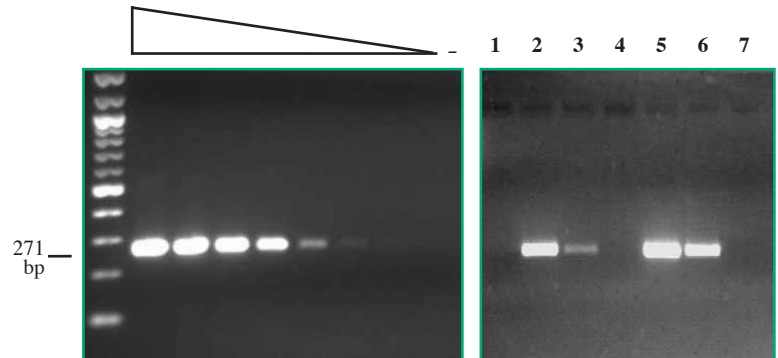
For accurate determination of mycoplasma contamination and decontamination of cultured cells. This simple PCR-based detection method uses a specially designed pair of PCR primers targeting the 16S rRNA sequences conserved in most mycoplasma species. The kit also includes a positive control to ensure the result is accurate and reliable. The method allows a rapid and qualitative assessment of whether a cell line in culture is contaminated by mycoplasma.

### Components (for 100 reactions):

- |                                             |             |
|---------------------------------------------|-------------|
| 1. 10X PCR Buffer                           | 500 $\mu$ L |
| 2. L-Myco Primer                            | 200 $\mu$ L |
| 3. R-Myco Primer                            | 200 $\mu$ L |
| 4. dNTP (250 $\mu$ M)                       | 200 $\mu$ L |
| 5. dH <sub>2</sub> O                        | 1.2 mL      |
| 6. Mycoplasma Positive Control DNA template | 40 $\mu$ L  |

### Not included:

**Genomic DNA purification kit (below)**  
**Taq polymerase**



**Titration of the 271 bp Mycoplasma positive control DNA template**  
 (detection limit is 4 fg/reaction)

**Detection of Mycoplasma contamination from different cell lines (1-7)**

## Genomic DNA Purification Kit

CAT. No.: Q920 PRICE: \$114

For rapid isolation of genomic DNA from cultured cells (fresh or frozen cells). The purified genomic DNA can be used for mycoplasma detection, Southern blot analysis, and other applications.

### Components (for 20 reactions):

- |                          |             |
|--------------------------|-------------|
| 1. TNE Buffer            | 3 X 1 mL    |
| 2. TNE Cell Lysis Buffer | 3 X 1 mL    |
| 3. 0.1X TE Buffer        | 2 X 1 mL    |
| 4. Proteinase K          | 100 $\mu$ L |

Figures above used DNA isolated using this kit

## General Cell Lines for Cell Culture

**293T cells**

Cat. No. Q401 \$248

**293T-S cells (for serum free media)**

Cat. No. Q401-S \$334

**cos-1 Host Cell Line**

Cat. No. Q451 \$213

**GH-CHO (DHFR-) Cells**

Cat. No. Q420 \$259

## Plasmids for Cell Culture

**pAPtag-2-DHFR Vector**

Cat. No. QVD2 \$2700

**pDHFR Vector (DHFR expression cassette)**

Cat. No. Q430 \$1112

**pSV2-Hygro co-transfection vector**

Cat. No. Q455 \$171

**pBabe-Hygro co-transfection vector**

Cat. No. Q455-B \$171

**pBabe-Puro co-transfection vector**

Cat. No. Q456 \$171



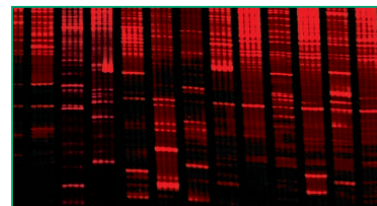


# More GenHunter Products and Services

DD, AP-TAG, RNA isolation/cleaning, PCR Cloning, etc.

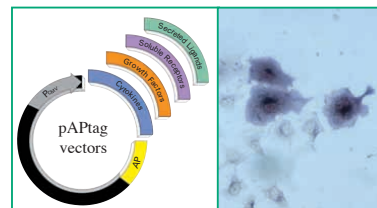
## Major Technologies

GenHunter Corporation was founded in 1992 in Boston by the co-inventor of **Differential Display (DD)**, a differential gene expression technology that has been used in over 4000 publications, to provide the biomedical research community easy access to the technology. In 1994, the company moved to Nashville, TN and began offering a complete line of innovative products and services for DD technology (U.S. Patents 5,262,311; 5,599,672; 5,665,547; 5,965,409; Japanese Patent 2843675).



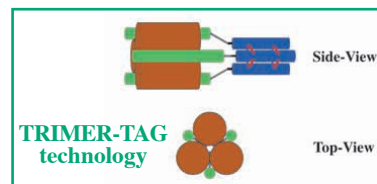
Fluorescent DD gel

In 1999, we added the **AP-TAG® Ligand/Receptor interaction technology** (U.S. patents 5,554,499 and 5,801,000). AP-TAG® has revolutionized the way cell surface receptors and ligands are detected and cloned. The technology allows one to further functionally characterize secreted proteins or cell surface molecules cloned by DD or other methods. We carry a complete line of products centered around this revolutionary approach to receptor/ligand studies.



AP-TAG Receptor/Ligand interaction

**TRIMER-TAG™** (U.S. patents 7,268,116; 7,666,837; and 7,691,815; pending European patents) is a new method for the production of “secreted” trimeric biological proteins that takes advantage of the properties of collagen, capable of efficient self-trimerization. This technology offers a new platform for the creation of trimeric soluble receptors and antibodies for more efficient targeting of corresponding disease-causing homotrimeric ligands, such as TNF family of cytokines and HIV gp120.



## Other Major Products

| <p><b>RNApure® Reagent</b></p>         | <p>RNA isolation reagent. Excellent quality at cheap price.</p> <table border="1"> <thead> <tr> <th></th> <th>CAT. NO.</th> <th>VOLUME</th> <th>PRICE</th> </tr> </thead> <tbody> <tr> <td>RNApure®</td> <td>P501</td> <td>50 mL</td> <td>\$63</td> </tr> <tr> <td>RNApure®</td> <td>P502</td> <td>100 mL</td> <td>\$102</td> </tr> <tr> <td>RNApure®</td> <td>P503</td> <td>200 mL</td> <td>\$180</td> </tr> <tr> <td>RNApure®</td> <td>P504</td> <td>500 mL</td> <td>\$444</td> </tr> </tbody> </table> |        | CAT. NO. | VOLUME | PRICE                         | RNApure® | P501  | 50 mL | \$63 | RNApure® | P502 | 100 mL | \$102 | RNApure® | P503 | 200 mL | \$180 | RNApure® | P504 | 500 mL | \$444 |  |
|----------------------------------------|-----------------------------------------------------------------------------------------------------------------------------------------------------------------------------------------------------------------------------------------------------------------------------------------------------------------------------------------------------------------------------------------------------------------------------------------------------------------------------------------------------------|--------|----------|--------|-------------------------------|----------|-------|-------|------|----------|------|--------|-------|----------|------|--------|-------|----------|------|--------|-------|--|
|                                        | CAT. NO.                                                                                                                                                                                                                                                                                                                                                                                                                                                                                                  | VOLUME | PRICE    |        |                               |          |       |       |      |          |      |        |       |          |      |        |       |          |      |        |       |  |
| RNApure®                               | P501                                                                                                                                                                                                                                                                                                                                                                                                                                                                                                      | 50 mL  | \$63     |        |                               |          |       |       |      |          |      |        |       |          |      |        |       |          |      |        |       |  |
| RNApure®                               | P502                                                                                                                                                                                                                                                                                                                                                                                                                                                                                                      | 100 mL | \$102    |        |                               |          |       |       |      |          |      |        |       |          |      |        |       |          |      |        |       |  |
| RNApure®                               | P503                                                                                                                                                                                                                                                                                                                                                                                                                                                                                                      | 200 mL | \$180    |        |                               |          |       |       |      |          |      |        |       |          |      |        |       |          |      |        |       |  |
| RNApure®                               | P504                                                                                                                                                                                                                                                                                                                                                                                                                                                                                                      | 500 mL | \$444    |        |                               |          |       |       |      |          |      |        |       |          |      |        |       |          |      |        |       |  |
| <p><b>MessageClean® Kit</b></p>        | <p>Industry standard for complete cleaning of DNA contamination from RNA to be used for DD, Microarray, Real-time PCR, etc.</p> <table border="1"> <thead> <tr> <th></th> <th>CAT. NO.</th> <th>PRICE</th> </tr> </thead> <tbody> <tr> <td>MessageClean® Kit (20 rxns)</td> <td>M601</td> <td>\$168</td> </tr> </tbody> </table>                                                                                                                                                                          |        | CAT. NO. | PRICE  | MessageClean® Kit (20 rxns)   | M601     | \$168 |       |      |          |      |        |       |          |      |        |       |          |      |        |       |  |
|                                        | CAT. NO.                                                                                                                                                                                                                                                                                                                                                                                                                                                                                                  | PRICE  |          |        |                               |          |       |       |      |          |      |        |       |          |      |        |       |          |      |        |       |  |
| MessageClean® Kit (20 rxns)            | M601                                                                                                                                                                                                                                                                                                                                                                                                                                                                                                      | \$168  |          |        |                               |          |       |       |      |          |      |        |       |          |      |        |       |          |      |        |       |  |
| <p><b>RNA Loading Mix</b></p>          | <p>For one-step denaturation and gel loading; includes EtBr.</p> <table border="1"> <thead> <tr> <th></th> <th>CAT. NO.</th> <th>PRICE</th> </tr> </thead> <tbody> <tr> <td>RNA Loading Mix (50 loadings)</td> <td>R104</td> <td>\$28</td> </tr> </tbody> </table>                                                                                                                                                                                                                                        |        | CAT. NO. | PRICE  | RNA Loading Mix (50 loadings) | R104     | \$28  |       |      |          |      |        |       |          |      |        |       |          |      |        |       |  |
|                                        | CAT. NO.                                                                                                                                                                                                                                                                                                                                                                                                                                                                                                  | PRICE  |          |        |                               |          |       |       |      |          |      |        |       |          |      |        |       |          |      |        |       |  |
| RNA Loading Mix (50 loadings)          | R104                                                                                                                                                                                                                                                                                                                                                                                                                                                                                                      | \$28   |          |        |                               |          |       |       |      |          |      |        |       |          |      |        |       |          |      |        |       |  |
| <p><b>PCR-TRAP® Cloning System</b></p> | <p>Highly efficient, positive-selection PCR product cloning system. Much better and cheaper than competitor's systems.</p> <table border="1"> <thead> <tr> <th></th> <th>CAT. NO.</th> <th>PRICE</th> </tr> </thead> <tbody> <tr> <td>PCR-TRAP® (30 clonings)</td> <td>P404</td> <td>\$370</td> </tr> </tbody> </table>                                                                                                                                                                                   |        | CAT. NO. | PRICE  | PCR-TRAP® (30 clonings)       | P404     | \$370 |       |      |          |      |        |       |          |      |        |       |          |      |        |       |  |
|                                        | CAT. NO.                                                                                                                                                                                                                                                                                                                                                                                                                                                                                                  | PRICE  |          |        |                               |          |       |       |      |          |      |        |       |          |      |        |       |          |      |        |       |  |
| PCR-TRAP® (30 clonings)                | P404                                                                                                                                                                                                                                                                                                                                                                                                                                                                                                      | \$370  |          |        |                               |          |       |       |      |          |      |        |       |          |      |        |       |          |      |        |       |  |

For more information about all of our products, please visit [www.GenHunter.com](http://www.GenHunter.com)



# GenHunter Corporation

624 Grassmere Park Dr, Ste. 17  
Nashville, TN 37211 USA

Phone: 800-311-8260  
615-833-0665

FAX: 615-832-9461

[info@genhunter.com](mailto:info@genhunter.com) (general)  
[orders@genhunter.com](mailto:orders@genhunter.com) (ordering)

[www.GenHunter.com](http://www.GenHunter.com)  
[www.PerfectWestern.com](http://www.PerfectWestern.com)

## 2016 Brochure

